

IT'S NOT THAT THE FORMULA IS ALTOGETHER UNHEARD OF. NO, THIS RECIPE SPRUNG FROM A BOOK THAT LINKS STRAIGHT BACK TO AN AUTOMOTIVE BIRTHRIGHT. TAKE ONE PART PURE AMERICAN STYLE, ADD A DOSE OF ENGINEERING INGENUITY AND GARNISH WITH AN OPEN SKY FOR ALL THE WORLD TO SEE. AND, IT SERVES FOUR. LEAVE IT TO CHRYSLER TO DELIVER THE 200 CONVERTIBLE. THIS IS INDEPENDENCE. THIS IS FREEDOM, IMPORTED FROM DETROIT.





TURNSTHESTREETINTOASTAGE.

**200 CONVERTIBLE IS THE ONLY VEHICLE IN ITS CLASS TO OFFER A RETRACTABLE HARDTOP.<sup>(1)\*</sup>** It's the power of superior design. Experience the best of both worlds at the touch of a button when you choose from two retractable droptops: the standard cloth soft top or the available retractable steel hardtop. The retractable system is designed to open and close the body-color rear-compartment cover and unlock, retract, and stow the entire top system with buttons on the center console or remotely open with the key fob. When either top is down, the trunk capacity still has more than enough room to easily fit two full-size suitcases. Tightened flow-through design and upgraded aerodynamics further enhance the feeling of floating on air. It's the freedom of choice and power that comes standard on the new Chrysler 200 Convertible.

\*A note about this brochure: All disclaimers and disclosures can be found on the inside back cover.

IMPORTED FROM DETROIT.



YOU DON'T HAVE TO CROSS AN OCEAN FOR A



CAR THAT WILL LOOK GOOD IN YOUR DRIVEWAY.





UPGRADED STANDARD FEATURES, REFINEMENT, AND INNOVATIVE TECHNOLOGIES IN AN EXQUISITELY STYLED PACKAGE. THIS IS THE CHRYSLER 200 CONVERTIBLE.

**MODERN FLUIDITY.** The redesigned convertible glimmers with a new Chrysler grille and badge, newly shaped fascias, and aluminum wheels. The body-color power heated mirrors and door handles streamline its presence while available brightwork gives a finish fit for its looks. The standard new bifunctional halogen projector headlamps provide a wide, clear night vision with high/low beam capability and outstanding forward and spread-light performance. LED light piping accents the headlamp's premium appearance and illumination. The available projector beam fog lamps provide better visibility and a sharp look to the redesigned front fascia, while the new LED taillamps and center-mounted stoplamp's intense illumination means viewers from the rear take notice.



**200 S – A PIVOTAL SHIFT IN CRUISING.** Chrysler 200 S takes style and attitude to a new level thanks to its special edition with a standard 3.6L Pentastar® V6 engine, 160-amp alternator, and some bold personality with a dark side. Starting with its Black grille, Black headlamp treatment with bright metalized projector rings and projector fog lamps, 200 S reinforces its strong first impression with body-color door handles and body-color heated exterior mirrors, Black painted rear fascia bar with Black “S” badge and 18-inch polished aluminum wheels featuring painted pockets. Brilliant LED taillamps and dual bright exhaust tips complete the style treatment.



THE SKY DOESN'T GET ANY BETTER WITH A CAR THAT COSTS TWICE THE PRICE.

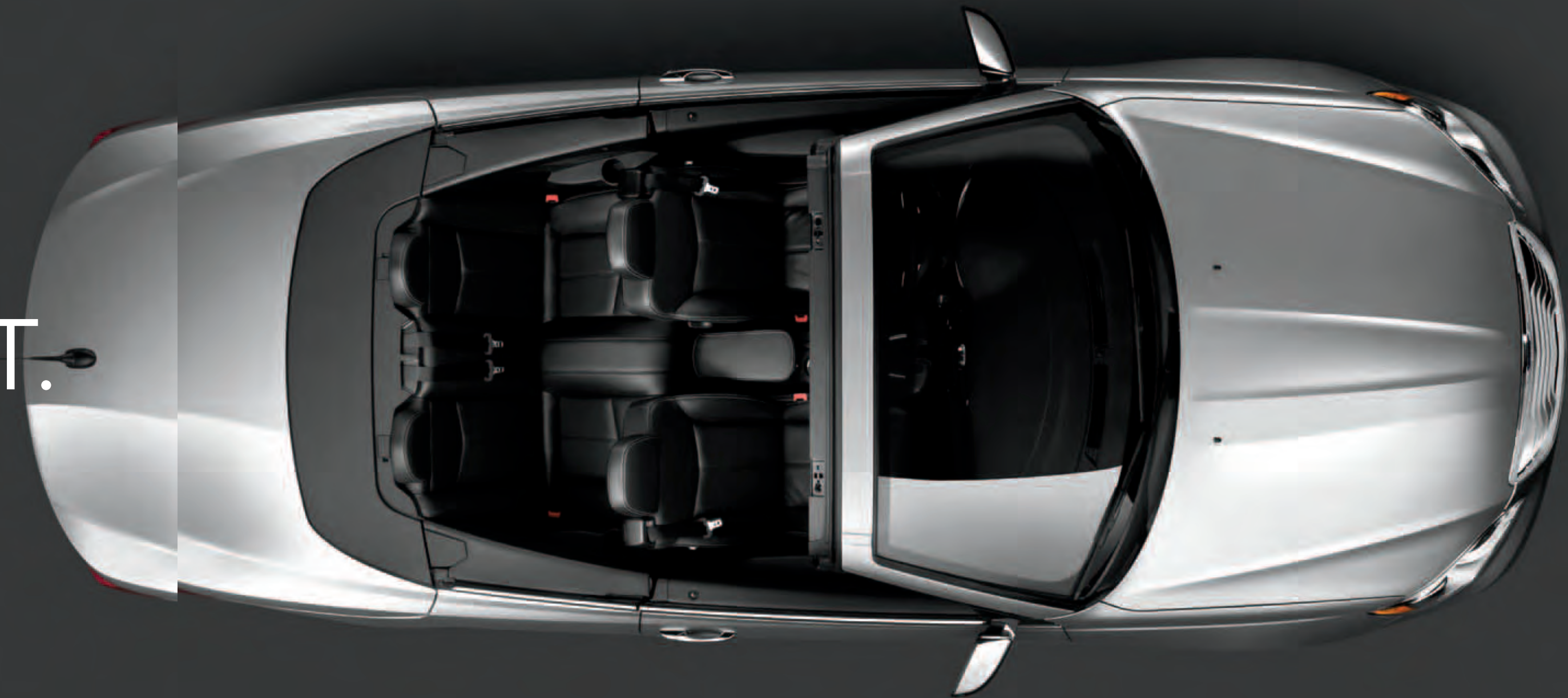
**COMFORT TO THE CORE.** The bolstered new seats envelop you and your passenger with new available leather and cloth seating materials and six-way power driver and front-passenger seats. The soft-touch armrests, premium interior touch points, automatic temperature control, and just-right LED ambient lighting continue the sense-pleasing journey. With seating for four and best-in-class<sup>(1)</sup> rear leg room, you may even share the life of leisure with those who deserve the trip. Whether the top is up or down, the spacious trunk can take in almost anything an overpacker can dish out.



THERE'S NO  
EXCUSE FOR  
NOT MAKING  
A TYPICAL  
MONDAY A  
SPECIAL ONE.



FREEDOM TAKES FLIGHT.







IT'S GOT



**AN ALL-NEW INTERIOR.** The ballet of hand-eye coordination becomes second nature when you interact with the all-new one-piece instrument panel, bezels, gauge face, and integrated controls on the standard leather-wrapped steering wheel. Operate the radio, cruise control, available hands-free phone, and other vehicle functions without having to change position or hand placement. Innovative features connect you to the real world, if you please, like an available Uconnect® Media Center with Voice Command and standard SIRIUS® Satellite Radio.<sup>(2)</sup> The one-touch-down convertible-top button is now intuitively located in the center console for easy access anytime. The 200 S interior sports Black leather-trimmed seating accented in Silver stitching with distinctive digital suede inserts. The driver and front-passenger seats feature embroidered "S" graphics as a unique stylish touch, and a perforated leather-wrapped steering wheel gives this pick added finesse.

A CERTAIN AIR ABOUT IT.



283<sup>HP</sup>  
29<sup>MPG</sup>

# POWERFUL STATEMENTS.

Whether galloping with the horsepower of the available Pentastar® V6 or bounding along with the 2.4L engine, 200 Convertible gives you the power to choose the performance.

## FUEL EFFICIENCY, REMARKABLE POWER, AND REFINEMENT — THIS IS HOW IT WORKS.

**THE ALL-NEW PENTASTAR® ENGINE.** It is the most advanced six-cylinder engine ever produced by Chrysler Group LLC. The available all-new 3.6-liter Flex Fuel Variable Valve Timing (VVT) Pentastar V6 DOHC is paired with a six-speed automatic transmission with first-rate noise, vibration, and harshness control. The only thing better than numbers like 283 horsepower and 260 lb-ft of torque is the engine's durability-enhancing features that require very low maintenance. Its impressive EPA estimated 19 city/29 highway mpg provides a glimpse of restraint within its appetite for the open road. It only makes sense that it was named one of *Ward's* 10 Best engines for 2011.

**A MUCH-MORE-THAN-BASIC BASE ENGINE.** The 2.4-liter four-cylinder engine with six-speed automatic transmission with AutoStick features dual VVT and provides a strong balance of fuel efficiency and solid performance with 173 hp.

**RIDE AND HANDLING.** Virtually every system has been upgraded for this convertible, and the improved ride and handling is no exception. The vehicle height was lowered 12 mm in front and 6 mm in the rear for improved steering response. MacPherson struts sit up front, supported by multilink coils in the back. Stiffened body mounts, a softer ride rate, improved suspension geometry with a raised roll center, and a retuned rear sway bar help pave the way for a smooth, controlled ride. This strength, agility, and refined precision deliver a responsive experience that enhances the thrill of the open-air ride.



THE SKY BELONGS TO ALL OF US.





#### SAFETY AND SECURITY.

**ELECTRONIC STABILITY CONTROL/ESC.<sup>(9)</sup>** In adverse conditions, ESC with Brake Assist works with an All-Speed Traction Control system to help maintain vehicle stability, limit oversteering or understeering, and automatically apply brake force when needed.

**AIR BAGS.<sup>(4)</sup>** All 200 models feature standard advanced multistage driver and front-passenger air bags, supplemental side-curtain air bags, and supplemental driver and front-passenger seat-mounted air bags.

**ACTIVE FRONT HEAD RESTRAINTS.<sup>(6)</sup>** Head restraints automatically move forward and upward in the event of a rear-end collision to decrease the space between the head restraint and the occupant's head, helping to reduce the chance of injury.

**TIRE PRESSURE MONITORING SYSTEM.** A warning lamp in the instrument cluster notifies you of low tire pressure. A Tire Pressure Monitoring Display alerts you of individual tire pressure for all four tires and is part of the available Electronic Vehicle Information Center (EVIC).

**SENTRY KEY® THEFT DETERRENT SYSTEM.** A unique security system code matched only to your vehicle allows your 200 to start only with the special encoded key.



# BUILT WITH CARE RIGHT HERE.

**ANTILOCK BRAKE SYSTEM/ABS.** Standard four-wheel antilock disc brakes afford premium stopping power from state-of-the-art electronics that provide faster system response. ABS senses and prevents wheel lockup, offering improved steering control under extreme braking and/or slippery conditions.

**LED BRAKE LIGHTS.** The new LED lamps provide brighter light than the previous model for enhanced rear-traffic attention and response to the driver's vehicle braking.

**SECURITY ALARM.** This system monitors the door-ajar switches as well as the ignition circuit for unauthorized entry. The lights flash and the horn sounds, alerting you if someone else is trying to enter your vehicle.

**REMOTE KEYLESS/ILLUMINATED ENTRY.** For additional convenience and security, this feature unlocks the driver's door on the first press of the key fob and all doors on the second press, illuminating interior lights once the vehicle is unlocked.

**HOMELINK® UNIVERSAL TRANSCEIVER.** This system stores three separate transmitter radio-frequency codes to operate garage-door openers, security gates, and home security lighting, or other remote radio-controlled devices that link to your home security system.



## A CONCIERGE OF MODERN MEDIA THAT CONNECTS YOU TO THE PEOPLE, MUSIC, AND DEVICES THAT MATTER MOST.

Uconnect® IS AN INTUITIVE HUB FOR ALL YOUR MEDIA — CELL PHONE, INTERNET, SATELLITE RADIO, NAVIGATION SYSTEM, AND MP3 PLAYER. THE SOLE PURPOSE OF THESE USER-FRIENDLY SYSTEMS IS TO MAKE YOUR LIFE EASIER, WHEREVER YOUR TRAVELS TAKE YOU.



**PHONE** Talking on the phone while driving has never been easier — or more responsible. Uconnect Phone is the in-vehicle, voice-activated communication system that allows you to pair up to seven Bluetooth® compatible phones and then talk virtually hands-free. This system is also clever enough to synchronize with your phone's address book<sup>(6)</sup> — up to 1,000 entries — every time you get into your vehicle.



**VOICE COMMAND** It simplifies driving by letting you keep your eyes on the road and your hands on the wheel. Vocally select FM radio stations, SIRIUS® Satellite Radio<sup>(2)</sup> channels, and make and receive calls. Along with pause and rewind capability, this smart system technology can also be adapted to better recognize your voice and can understand commands in English, French, and Spanish.



**WEB** Put the power of high-speed Internet in your vehicle with Uconnect Web<sup>(7)</sup>. Effortlessly connect any WiFi-enabled device to the Internet at 3G broadband speeds, making your vehicle a mobile Hotspot. Passengers can use multiple devices at the same time. There's no need for cell cards or software with this unique Authentic Accessory by Mopar — it's all wireless. Subscription required. Sold separately.



**ENTERTAINMENT** Manage all of your media. You'll have multiple ways to access audio, including SIRIUS Satellite Radio<sup>(2)</sup> with a 44-minute pause-and-rewind feature (your first year of service is included), auxiliary jack, and a USB port with Voice Command. You can also stream your music wirelessly from a Bluetooth enabled device to the radio, as well as download up to 4,250 songs on the available in-vehicle touch-screen radio.



**NAVIGATION** The enhanced GPS and navigation systems provide turn-by-turn voice guidance and visual display. They can also locate nearby restaurants, shopping, hospitals, or points of local interest. Add SIRIUS Traffic<sup>TM(2)</sup> for real-time traffic updates, including accident alerts, road closings, and traffic flow. Your first year of SIRIUS Traffic<sup>(2)</sup> service is included.

**SIRIUS® TRAVEL LINK<sup>TM(2)</sup>** This feature brings a wealth of useful information to your fingertips, including national weather information for current and forecasted weather, local fuel prices, in-game and final sports scores, as well as weekly schedules and movie listings.



# STANDARD AND OPTIONAL FEATURES

	TOURING	LIMITED	S
<b>ENGINE/TRANSMISSION</b>			
<b>2.4L DOHC 16V I-4 WORLD ENGINE</b> – 6-speed automatic	29V		
<b>3.6L PENTASTAR® VVT V6 FLEX FUEL</b> – 6-speed AutoStick	27V	27W	27S
<b>MECHANICAL</b>			
<b>ALTERNATOR</b> – 140-amp	S		
– 160-amp (included with 3.6L V6)	P	S	S
<b>BATTERY</b> – 525-amp, maintenance-free	S	S	S
<b>BRAKE/PARK INTERLOCK</b>	S	S	S
<b>BRAKES</b> – 4-wheel disc, antilock	S	S	S
<b>ENGINE BLOCK HEATER</b>	O	O	O
<b>REMOTE START SYSTEM</b> (Included in Cold Weather Group)	P	S	S
<b>SPEED CONTROL</b> – Electronic with stalk-mounted controls	S	S	S
<b>SPEEDOMETER</b> – 120-mph, with tachometer	S	S	S
<b>STABILIZER BARS</b> – Front and rear	S	S	S
<b>STEERING</b> – Power, rack-and-pinion	S	S	S
<b>TOURING SUSPENSION</b>	S	S	S
<b>TIP START</b>	S	S	S
<b>EXTERIOR FEATURES</b>			
<b>ANTENNA</b> – Removable short-mast	S	S	S
<b>DOOR HANDLES</b> – Body-color	S		S
– Bright		S	
<b>EXHAUST TIPS</b> – Dual, bright (Included with 3.6L engine)	P	S	S
<b>FASCIAS</b> – Body-color	S	S	S
<b>FOG LAMPS</b>		S	S
<b>FUEL TANK</b> – 16.9-gallon	S	S	S
<b>GLASS</b> – Tinted, front and rear Solar-Control and acoustic laminated windshield	S	S	S
<b>GRILLE</b> – Bright/Argent	S	S	
– Black/Bright			S
<b>HARD TONNEAU COVER</b>	S	S	S

	TOURING	LIMITED	S
<b>EXTERIOR FEATURES (continued)</b>			
<b>HEADLAMPS</b> – Bifunction halogen projector with headlamps-off time-delay feature	S	S	S
– Automatic	S	S	S
<b>HOOD INSULATION</b>	S	S	S
<b>MIRRORS</b> – Foldaway	S	S	S
– Power, heated, body-color	S		S
– Power, heated, bright		S	
<b>TIRES</b> – P225/55 R17 BSW All-Season	S		
– P225/50 R18 BSW All-Season touring (included with 18-inch aluminum wheels)	P	S	S
– Compact spare	S	S	S
<b>TOPS</b> – Power, cloth with remote top down on key fob	S	S	S
– Power, retractable hardtop with trunk lid liner with remote top down on key fob		O	O
<b>TRUNK LID POWER RELEASE</b>	S	S	S
<b>WHEELS</b> – 17-inch aluminum wheels	S		
– 18-inch polished aluminum wheels		S	
– 18-inch polished aluminum with Black pockets			S
<b>WINDSHIELD WIPERS</b> – Variable intermittent	S	S	S
<b>INTERIOR FEATURES</b>			
<b>AIR CONDITIONING w/AUTOMATIC TEMPERATURE CONTROL</b>	S	S	S
<b>AIR FILTERING</b>	S	S	S
<b>ANALOG CLOCK</b>	S	S	S
<b>BEZELS</b> – Silver instrument panel	S	S	S
<b>CONSOLE</b> – Floor with fore/aft sliding armrest, with dual storage compartments and rear courtesy light	S	S	S
<b>DEFROSTER</b> – Rear-window	S	S	S
<b>DOOR LOCKS</b> – Power	S	S	S
<b>DOOR SILL SCUFF PADS</b>	S	S	S
– Bright		S	
<b>INSTRUMENT CLUSTER WITH LED LIGHTING</b>	S	S	S

	TOURING	LIMITED	S
<b>INTERIOR FEATURES (continued)</b>			
<b>ELECTRONIC VEHICLE INFORMATION CENTER (EVIC)</b> – Included with instrument cluster with display screen	S	S	S
<b>FLOOR MATS</b> – Luxury, front and rear	S	S	S
<b>GLOVE BOX</b> – Locking	S	S	S
<b>HOMELINK® GARAGE DOOR OPENER</b>	S	S	S
<b>MIRROR</b> – Rearview, day/night with reading lamps	S		
– Rearview, auto-dimming with reading lamps (Included with Uconnect Voice Command)	P	S	S
– Visor/vanity mirror	S	S	S
<b>POWER OUTLETS</b> – 12V center stack-mounted	S	S	S
– 12V center console-mounted	S	S	S
<b>POWER TOP AND WINDOWS DOWN WITH KEY FOB</b>	S	S	S
<b>SHIFT KNOB</b> – Leather-wrapped	S	S	S
<b>STEERING COLUMN</b> – Tilt/telescoping, manual	S	S	S
<b>STEERING WHEEL</b>	S	S	
– Leather-wrapped	S	S	
– Perforated leather			S
– Audio controls	S	S	S
<b>TEMPERATURE AND COMPASS GAUGE</b>	S	S	S
<b>WINDOWS</b> – Power, driver's and front-passenger with one-touch down	S	S	S
<b>WINDSCREEN</b>		S	S
<b>SEATING</b>			
<b>FRONT</b> – Premium cloth bucket seats	S		
– Premium leather-trimmed bucket seats		S	
– Premium leather-trimmed bucket seats with digital suede inserts			S
– Power, 6-way driver's and front-passenger seats	S	S	S
– Driver's manual lumbar adjustment	S	S	S
– Heated front seats (Included in Cold Weather Group)	P	S	S

	TOURING	LIMITED	S
<b>ENTERTAINMENT SYSTEMS</b>			
<b>RADIO</b> – Media Center 130 AM/FM/6-disc DVD/MP3 with auxiliary jack	S		
– Media Center 430 AM/FM/CD/DVD radio with MP3/WMA support, 30GB hard drive with 6,700 song capacity, CD/DVD player, 6.5-inch touch screen, SIRIUS® Satellite Radio, <sup>(2)</sup> audio jack and Voice Command	O	S	S
– Media Center 730N includes AM/FM/CD/DVD/HDD/MP3 radio with navigation and touch screen/voice recognition operation and real-time traffic updates		O	O
– SIRIUS Satellite Radio System <sup>(2)</sup> with one-year subscription	S	S	S
<b>SOUND SYSTEMS</b> – Six speakers	S	S	
– Six Boston Acoustics® speakers, amplifier		O	S
<b>SAFETY AND SECURITY</b>			
<b>ACTIVE HEAD RESTRAINTS<sup>(5)</sup></b>	S	S	S
<b>AIR BAGS<sup>(4)</sup></b> – Advanced multistage for driver and front passenger	S	S	S
– Supplemental driver and front-passenger seat-mounted/head/thorax	S	S	S
<b>CHILD SEAT ANCHOR SYSTEM (LATCH)</b>	S	S	S
<b>SEAT BELTS</b> – Front three-point with shoulder adjustment	S	S	S
– Rear, three point	S	S	S
<b>ELECTRONIC STABILITY CONTROL<sup>(3)</sup></b> – With all-speed traction control	S	S	S
<b>INSIDE EMERGENCY TRUNK LID RELEASE</b>	S	S	S
<b>REMOTE KEYLESS/ILLUMINATED ENTRY</b>	S	S	S
<b>SECURITY ALARM</b>	S	S	S
<b>SENTRY KEY®</b> – Antitheft engine immobilizer	S	S	S
<b>TIRE PRESSURE MONITORING DISPLAY SYSTEM</b> – Individual tire pressures shown on EVIC	S	S	S
<b>UCONNECT VOICE COMMAND</b> – Includes auto-dimming rearview mirror with microphone; Bluetooth® streaming audio and remote USB port	O	S	S
<b>PACKAGES</b>			
<b>COLD WEATHER GROUP</b> – Includes heated seats and remote start	O		
<b>SMOKER'S GROUP</b> – Includes removable ashtray, cigar lighter	O	O	O

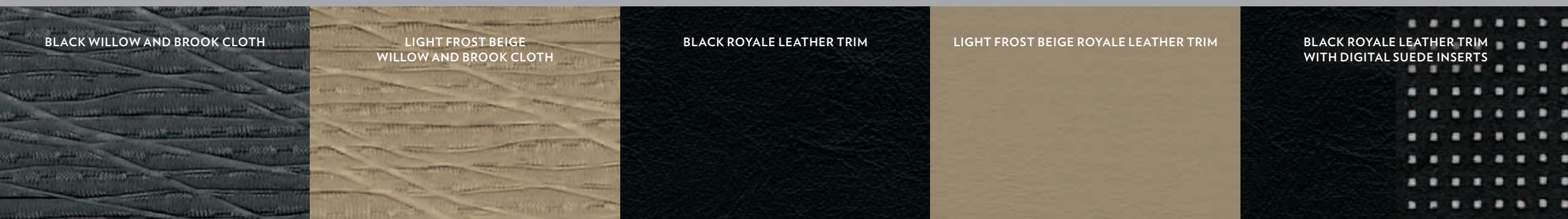
S = Standard. P = Included in package noted in parentheses. O = Optional.



BLACK      BRIGHT SILVER METALLIC      TUNGSTEN METALLIC      DEEP CHERRY RED CRYSTAL PEARL      SAPPHIRE CRYSTAL METALLIC      BLACKBERRY PEARL      BRIGHT WHITE

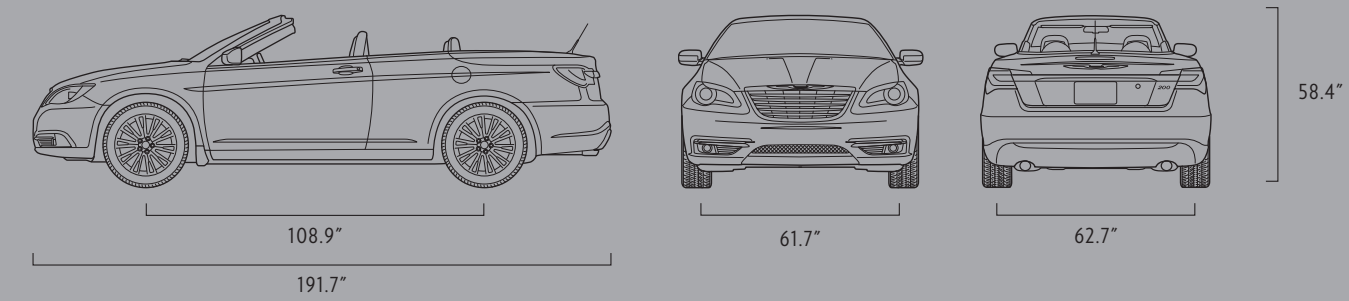
EXTERIOR COLORS ^

INTERIOR TRIM COLORS v



BLACK WILLOW AND BROOK CLOTH      LIGHT FROST BEIGE WILLOW AND BROOK CLOTH      BLACK ROYALE LEATHER TRIM      LIGHT FROST BEIGE ROYALE LEATHER TRIM      BLACK ROYALE LEATHER TRIM WITH DIGITAL SUEDE INSERTS

DIMENSIONS



	TOURING		LIMITED		S
	BLACK CLOTH	LIGHT FROST BEIGE CLOTH	BLACK LEATHER TRIM	LIGHT FROST BEIGE LEATHER TRIM	BLACK LEATHER TRIM W/DIGITAL SUEDE INSERTS
<b>INTERIOR TRIM COLORS</b>					
<b>EXTERIOR COLORS</b>					
BLACK	X	X	X	X	X
BLACKBERRY PEARL	X	X	X	X	
BRIGHT SILVER METALLIC	X	X	X	X	
BRIGHT WHITE	X	X	X	X	X
DEEP CHERRY RED CRYSTAL PEARL	X	X	X	X	X
SAPPHIRE CRYSTAL METALLIC	X	X	X	X	
TUNGSTEN METALLIC	X	X	X	X	X
<b>RETRACTABLE CLOTH TOP</b>					
BLACK CLOTH	X	X	X	X	X
PEBBLE BEIGE CLOTH	X	X	X	X	
<b>RETRACTABLE HARDTOP*</b>					
BODY-COLOR HARDTOP			X	X	X
BLACK HARDTOP*			X	X	

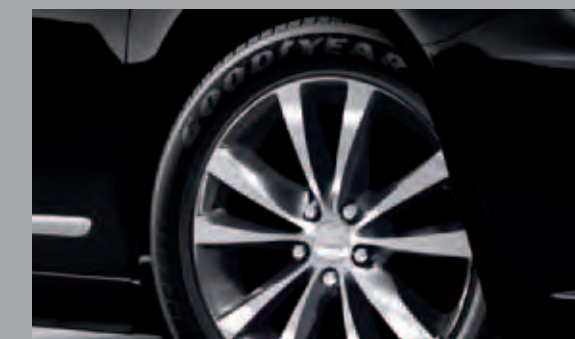
\*Hardtop only available on Limited and S models.  
 \*Black hardtop only available with Bright White, Deep Cherry Red Crystal Pearl, and Tungsten Metallic exterior colors.



17-INCH ALUMINUM WHEEL  
Standard on Touring



18-INCH POLISHED ALUMINUM WHEEL  
Standard on Limited



18-INCH POLISHED ALUMINUM WHEEL WITH BLACK PAINTED POCKETS  
Standard on S



#### CHRYSLER SERVICE CONTRACTS

Chrysler Group LLC has a vested interest in your satisfaction and owner experience with your new Chrysler vehicle. Chrysler Group Service Contracts offer extended service plans to help ensure that you'll enjoy your vehicle for many years down the road – for just pennies a day. For more information on comprehensive vehicle coverage, see your Chrysler dealer, call (800) 442-2666, or visit [chrysler.com/csc](http://chrysler.com/csc).

#### CHRYSLER.COM

Our Web site offers detailed information on all Chrysler products. You can virtually assemble any vehicle you like. Simply choose the model with your favorite color combinations, equipment, and features – and then price it all out.

#### UCONNECT®

With Uconnect, you're always connected – to people, places, music, movies, and the Internet.

#### AUTHENTIC CHRYSLER ACCESSORIES BY MOPAR

Are designed specifically for your Chrysler vehicle for exceptional fit, finish, and performance. Visit your dealership or [mopar.com](http://mopar.com).

#### WARRANTIES

Chrysler vehicles are covered by a Chrysler Group LLC 3-Year or 36,000-Mile Basic Limited Warranty. See your dealer for a

copy of this limited warranty (excludes normal maintenance and wear items), as well as a 5-Year or 100,000-Mile Powertrain Limited Warranty that is fully transferable and includes towing to an authorized dealer. Ask your dealer for details and a copy of these limited warranties.

#### AUTOMOBILITY

Chrysler Group LLC's Automobility program provides aftermarket reimbursement incentives on adaptive vehicle upfit equipment in order to help provide safe and reliable vehicle modifications to enhance accessibility for all people. For more information, call (800) 255-9877 or visit [chryslerautomobility.com](http://chryslerautomobility.com).

#### SIRIUS® SATELLITE RADIO

SIRIUS Satellite Radio delivers over 130 channels, including 100% commercial-free music, sports, news, talk, entertainment, traffic and weather. Factory-installed SIRIUS Satellite Radio includes a one-year subscription. For more information, go to [sirius.com](http://sirius.com).

#### CHRYSLER COLLECTION

Display your affection for striking beauty and one-of-a-kind style beyond the driver's seat. The Chrysler Collection offers merchandise to complement your active lifestyle and love of quality. From trendy apparel to conversation pieces for your home, there is something for everyone. Visit [chrysler.com/collection](http://chrysler.com/collection) today.



This brochure is a publication of Chrysler Group LLC. All product illustrations and specifications are based upon current information at the time of publication approval. Chrysler Group LLC reserves the right to make changes from time to time, without notice or obligation, in prices, specifications, colors, materials and to change or discontinue models, which are considered necessary to the purpose of product improvement or for reasons of design and/or marketing. Chrysler, Mopar, Pentastar, Sentry Key and Uconnect are registered trademarks of Chrysler Group LLC. Bluetooth is a registered trademark of Bluetooth SIG, Inc. Boston Acoustics is a registered trademark of Boston Acoustics, Inc. HomeLink is a registered trademark owned by Johnson Controls, Inc. SIRIUS, XM and all related marks and logos are trademarks of SIRIUS XM Radio Inc. and its subsidiaries.

(1) Based on Chrysler Group LLC Standard Convertible segment. (2) Required SIRIUS Radio, Traffic, Travel Link, and Backseat TV subscriptions sold separately after trial period. Other fees and taxes will apply. SIRIUS Traffic and Travel Link available in select markets; Backseat TV subscription not available without SIRIUS Radio subscription; and SIRIUS data displays and individual product availability vary by hardware equipment. SIRIUS service available only to those at least 18 years of age in the 48 contiguous U.S.A., DC, and Puerto Rico (with coverage limitations), while Internet radio is also available in AK, HI, and PR. Fees and programming subject to change. Service automatically renews and you will be billed, at then-current rates, unless you call 1-888-539-7474 to cancel. Subscriptions governed by SIRIUS Terms and Conditions available at [sirius.com](http://sirius.com). Service available in Canada; see [siriuscanada.ca](http://siriuscanada.ca). (3) No system, no matter how sophisticated, can repeal the laws of physics or overcome careless driving actions. Performance is limited by available traction, which snow, ice and other conditions can affect. When the ESC warning lamp flashes, the driver needs to use less throttle and adapt speed and driving behavior to prevailing road conditions. Always drive carefully, consistent with conditions. Always wear your seat belt. (4) The Advanced Front Air Bags in this vehicle are certified to the new U.S. federal regulations for advanced air bags. Children 12 years old and younger should always ride buckled up in a rear seat. Infants in rear-facing child restraints should never ride in the front seat of a vehicle with a passenger front air bag. All occupants should always wear their lap and shoulder belts properly. (5) Always sit properly with the head restraint properly adjusted. Never place anything in front of the head restraint. (6) Phone must support Bluetooth Phone Book Access Profile (PBAP). (7) Uconnect Web feature is not intended for use by the driver while the vehicle is in motion. Always drive carefully. Subscription required.



AUTHENTIC CHRYSLER ACCESSORIES



#### THE FINISHING TOUCH.

Enhance your new 200 Convertible with sophisticated style, premium protection, and engaging entertainment, knowing that every accessory meets Mopar's stringent guidelines for fit and finish. Choose from a vast array of selections designed with purpose specifically for your 200 Convertible such as: Katzkin® Leather Interiors, Ambient Light Kit, Sport and Cargo Carriers, and Electronics, as well as those accessories shown at right. For the full line of accessories, visit [mopar.com](http://mopar.com).



Molded Splash Guards



Hitch Receiver and Hitch-Mount Bike Carrier



# 200

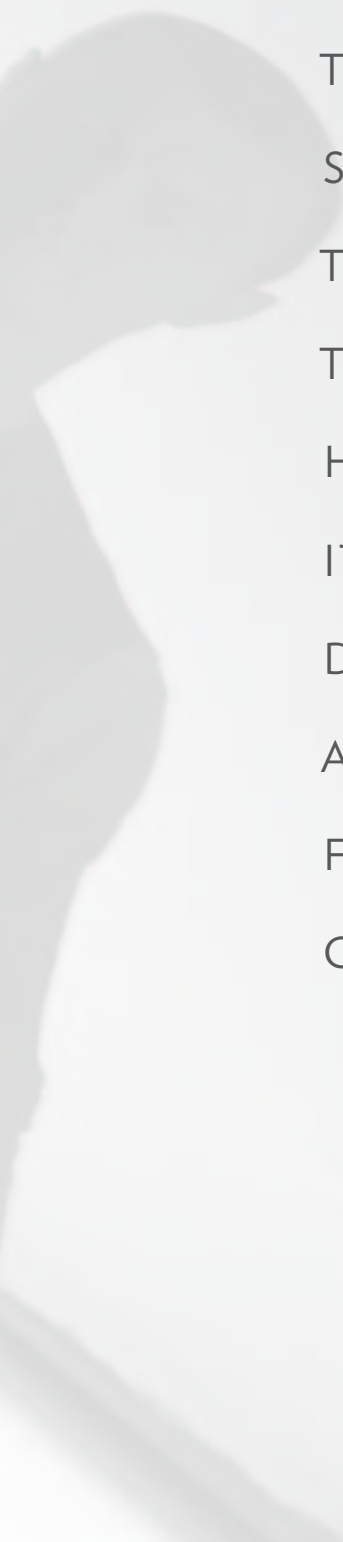
CONVERTIBLE



2012 CHRYSLER 200 CONVERTIBLE



IT HAS EARNED ITS WINGS.



HERE'S TO MAKING THE MOST OF THE  
SKY ABOVE. HERE'S TO WORKING HARD  
AND EARNING THOSE FEW MOMENTS TO  
TAKE IT ALL IN. AFTER ALL, A CONVERTIBLE  
SHOULD LET THE SUN AND SKY IN WITH  
THE SAME EASE IN WHICH YOU'RE ABLE  
TO LET IT ALL OUT. THIS CONVERTIBLE  
HAS BEEN BUILT IN-HOUSE, ALONGSIDE  
ITS CHRYSLER 200 STABLEMATES, TO  
DELIVER THE SAME GREATNESS WITH  
AN EXTRA WALLOP OF SUNSHINE AND  
FREEDOM. BEHOLD THE CHRYSLER 200  
CONVERTIBLE. IMPORTED FROM DETROIT.™





LUMINOUS IMPRESSION. The Chrysler winged grille and badge glimmer as sculpted front and rear fascias and aluminum wheels boast a fresh perspective from the onset. The standard body-color door handles and power heated mirrors streamline its presence while available brightwork gives a finish fit for its looks. Standard bifunctional halogen projector headlamps provide a wide, clear night vision with high/low beam capability and outstanding forward and spread-light performance. LED light piping accents the headlamps' premium appearance and illumination. The available projector beam fog lamps provide sharp visibility and looks, while the LED taillamps and center-mounted stoplamp's intense illumination means viewers take notice from every angle.



PROMISE  
BLOOMS  
HERE.



## THE BEST OF BOTH WORLDS.

CONVERTIBLE TOPS. The smell of just-cut alfalfa and the quick switch from warm to cool as you crest a country road. This is why the world needs convertibles. And why you want this one. The Chrysler 200 Convertible offers two different power tops to fit your lifestyle.



A classic power cloth soft top easily folds into the trunk making it simple to enjoy open-air driving. The retractable steel hardtop, available on the 200 Convertible S and Limited, combines the fun of a convertible with the practicality of a conventional sedan. Both feature a seamless look when lowered, thanks to a power hard tonneau cover. When either top is down, the trunk capacity is still more than enough to easily fit two golf bags. Tightened flow-through design further enhances the feeling of floating on air. It's the freedom of choice and power that comes standard on the Chrysler 200 Convertible.











# ATTITUDE GOES WITH ANYTHING.

Chrysler 200 S Convertible projects a style and attitude all its own, thanks to a special edition with a standard 3.6L Pentastar® V6 engine, 160-amp alternator, and a dose of well-defined personality. Starting with its Black grille, Black headlamp treatment with bright metalized projector rings, and projector fog lamps, 200 S reinforces its strong first impression with body-color door handles and body-color heated exterior mirrors, Black painted rear fascia bar, Black "S" badge and 18-inch polished aluminum wheels featuring Black painted pockets. Brilliant LED taillamps and dual bright exhaust tips give a parting shot of brightness.







C2S



## 200 CONVERTIBLE IS THE ONLY VEHICLE IN ITS CLASS TO OFFER A RETRACTABLE HARDTOP.<sup>†\*</sup>

Experience the power of superior design when you choose from the standard cloth soft top or the available retractable steel hardtop. In both soft and hard forms, the power convertible top folds in three sections and automatically latches with a switch on the center console or the press of a button on the key fob, each taking approximately 30 seconds to raise or retract while an automatic hard cover conceals the stowage area when the top is down. Also included is an automatic Smart Glass system. It protects the top weather strips and window seals by lowering the windows slightly whenever the convertible top is lowered or when the doors are opened or closed. When the door handle is pulled, the windows lower approximately half an inch, preventing resistance or damage to the window or top weather strips as the door opens. Once the door is closed, the window fully closes.



\*A NOTE ABOUT THIS BROCHURE: ALL DISCLAIMERS AND DISCLOSURES CAN BE FOUND IN THE BACK OF THE BROCHURE.





# BUILT FOR BASKING.

**VIEWING LOUNGE.** The bolstered seats envelop you and your passengers with available leather-trimmed and cloth seating materials and six-way power driver and front-passenger seats. The soft-touch armrests, premium interior touch points, automatic temperature control, and just-right LED ambient lighting continue the sense-pleasing journey. With seating for four and best-in-class<sup>(1)</sup> rear leg room, you may even share the life of leisure with those who deserve the trip. Whether the top is up or down, the spacious trunk can take in almost anything an overpacker can dish out.

**CONVENIENCE ROOM.** Hand-eye coordination becomes second nature when you interact with the one-piece instrument panel, bezels, gauge face, and integrated controls on the standard leather-wrapped steering wheel. Operate the radio, cruise control, available hands-free phone, and other vehicle functions without having to change position or hand placement. Innovative features connect you to the real world, if you please, like an available Uconnect<sup>®</sup> touch screen with Voice Command and standard SiriusXM<sup>™</sup> Satellite Radio.<sup>(2)</sup> The convertible-top button is intuitively located in the center console for easy access anytime. The Chrysler 200 S Convertible interior sports Black leather-trimmed seating accented in Silver stitching with distinctive digital suede inserts. The driver and front-passenger seats feature embroidered "S" graphics as a unique stylish touch, and a perforated-leather-wrapped steering wheel gives this pick added finesse.





Chrysler 200 Convertible Limited shown in Black and Pearl.





283<sup>HP</sup>

PENTASTAR® V6 ENGINE

29<sup>HWY</sup>  
MPG



AT THE HEART OF ITS CORE BEATS A POWERFUL COMMITMENT TO PERFORMANCE, EFFICIENCY, AND THE FUTURE.

It is the most advanced six-cylinder engine ever produced by Chrysler Group LLC and it just happens to be shared with its Chrysler 300 stablemate. The available 3.6L Pentastar® V6 with Variable Valve Timing (VVT) is paired with a six-speed automatic transmission with first-rate noise, vibration, and harshness control. The only thing better than numbers like 283 horsepower and 260 lb-ft of torque is the engine's durability-enhancing features that require very low maintenance. Its impressive EPA estimated 19 city/29 highway mpg provides a glimpse of restraint within its appetite for the open road. The standard 2.4L engine with VVT is mated to a six-speed automatic transmission with AutoStick. It provides a strong balance of fuel efficiency (EPA estimated 18 city/29 highway mpg) and solid performance with 173 horsepower.





# STRONG AND AGILE. EXACTLY.

**RIDE AND HANDLING.** Virtually every system for this convertible has been engineered for an exceptional performance experience. MacPherson struts sit up front to provide an optimum balance of ride, handling, and noise isolation. These are supported by multilink coils in the back, which allow individual articulation of the rear wheels over varying road surfaces for a level ride. Additional components include large-diameter front and rear sway bars, stiffened body mounts and soft ride rate, all paving the way for a smooth and controlled ride. These drivetrain and suspension enhancements also contribute to the reduction of noise, vibration, and harshness (NVH), while the premium 17- and 18-inch touring tires provide solid balance and response.

**AUTOSTICK.** Paired with either the 2.4L four-cylinder engine or the available 3.6L Pentastar® V6 engine, the six-speed automatic transmission with standard AutoStick shifter allows clutchless manual or automatic gear selection for a dynamic driving experience.







# THIS IS THE MOTOR CITY AND THIS IS WHAT WE DO.

MADE RIGHT HERE. It might be common practice for car companies to ship their convertible assembly off to a third party; but the Chrysler 200 Convertible is built alongside its sedan counterparts and leaves the Michigan factory with a unique pedigree.



# BUILT WITH A LEVEL OF CONFIDENCE STAMPED IN STEEL.

SPECIFICALLY DESIGNED FRONT AND REAR CRUMPLE ZONES HELP ABSORB ENERGY AND REDIRECT IT AWAY FROM PASSENGERS, HELPING TO REDUCE THE RISK OF INJURY IN THE EVENT OF A COLLISION.

**ANTILOCK BRAKE SYSTEM/ABS.** Standard four-wheel antilock disc brakes afford premium stopping power from state-of-the-art electronics that provide faster system response. ABS senses and prevents wheel lockup, offering improved steering control under extreme braking and/or slippery conditions.

**SENTRY KEY® THEFT DETERRENT SYSTEM.** A unique security system code matched only to your vehicle allows your 200 Convertible to start only with the special encoded key.

**SECURITY ALARM.** This system monitors the door-ajar and trunk switches as well as the ignition circuit for unauthorized entry. The lights flash and the horn sounds, alerting you if someone else is trying to enter your vehicle.

**REMOTE KEYLESS/ILLUMINATED ENTRY.** For additional convenience and security, this feature unlocks the driver's door on the first press of the key fob and all doors on the second press, illuminating interior lights once the vehicle is unlocked.

**ELECTRONIC STABILITY CONTROL/ESC.<sup>(3)</sup>** In adverse conditions, ESC and Brake Assist work with an all-speed traction control system to help maintain vehicle stability, limit oversteering or understeering, and automatically apply brake force when needed.

**AIR BAGS.<sup>(4)</sup>** All 200 Convertible models feature standard advanced multistage driver and front-passenger air bags, and supplemental driver and front-passenger seat-mounted air bags.

**ACTIVE FRONT HEAD RESTRAINTS.<sup>(5)</sup>** Head restraints automatically move forward and upward in the event of a rear-end collision to decrease the space between the head restraint and the occupant's head, helping to reduce the chance of injury.

**TIRE PRESSURE MONITORING SYSTEM.** A warning lamp in the instrument cluster notifies you of low tire pressure. A Tire Pressure Monitoring Display alerts you to individual tire pressure for all four tires and is part of the available Electronic Vehicle Information Center (EVIC).



# CONNECT TO THE PEOPLE, MUSIC, AND INFORMATION THAT MATTER MOST.

UCONNECT® IS AN INTUITIVE HUB FOR ALL YOUR MEDIA — CELL PHONE, INTERNET, SIRIUSXM™ SATELLITE RADIO,<sup>(2)</sup> NAVIGATION SYSTEM, SMARTPHONE, AND MP3 PLAYER. THE UCONNECT USER-FRIENDLY SYSTEM ALLOWS YOU TO STAY CONNECTED, INFORMED, ENTERTAINED, AND FOCUSED ON DRIVING.



**ENTERTAINMENT.** Manage all of your media with multiple ways to access audio, including Bluetooth® streaming audio, iPod® control with Voice Command, DVD player, audio jack, SD card slot, compatible multimedia devices, and gaming consoles. With SiriusXM Satellite Radio<sup>(2)</sup> (your first year of service is included), you get over 130 channels, including commercial-free music plus all your favorite sports, news, talk and entertainment — all with coast-to-coast coverage, 24/7.



**PHONE.** Talking on the phone while driving has never been easier — or more responsible. Uconnect Phone is the in-vehicle, voice-activated communication system that allows you to pair up to seven Bluetooth compatible phones and then talk virtually hands-free. This system is also clever enough to synchronize with your phone's address book<sup>(3)</sup> — up to 1,000 entries — every time you get into your vehicle.



**NAVIGATION.** Provides turn-by-turn voice guidance and visual display. It can also locate nearby restaurants, shopping, hospitals, or points of local interest through an exclusive GPS system. It features an intuitive user interface, bringing the handheld experience to a factory in-dash radio. With SiriusXM Traffic™<sup>(2)</sup> (one-year subscription included) you'll get continuously updated information on accidents, traffic flow, construction, and road closures.



**VOICE COMMAND.** It simplifies driving by letting you keep your eyes on the road and your hands on the wheel. Use your voice to select AM/FM radio stations, SiriusXM Satellite Radio<sup>(2)</sup> channels, and make and receive calls. Along with pause and rewind capability, this smart system technology can also be adapted to better recognize your voice and can understand commands in English, French, and Spanish.



**WEB.** Put the power of high-speed Internet in your vehicle with Uconnect Web.<sup>(2)</sup> Effortlessly connect any WiFi-enabled device to the Internet at 3G broadband speeds, making your vehicle a mobile Hotspot. Passengers can use multiple devices at the same time. There's no need for cell cards or software with this Authentic Chrysler Accessory by Mopar.<sup>®</sup> It's all wireless. Subscription required. Sold separately.

## SiriusXM TRAVEL LINK

Access a wealth of current information at your fingertips, including national and local weather forecasts, radar images, and detailed storm information with speed and direction, even local ski slope conditions. Review fuel prices at local gas stations to find the lowest price in your area. Sports fans can learn in-game and final sports scores and weekly game schedules. You can also get detailed weekly movie listings, show times and ratings, as well as watch your personal portfolio of stocks as they move up or down throughout the day. Subscription is required after one-year included service.



SiriusXM



## AUTHENTIC CHRYSLER ACCESSORIES.

**SPORT.** No matter what adventure you seek, you'll want to add to the sport of it all with durable and convenient Mopar carriers.

**PROTECTION.** Safeguard your vehicle with parts and accessories made precisely for the protection and security of your ride.

**STYLE.** Select from a palette of attractive accessories designed to enhance your vehicle's appearance and express your individual taste.

**COMFORT.** Raise the comfort level of your vehicle's interior. From Heated Seats to Katzkin Leather Interiors, you and your passengers will notice the Mopar difference.



MOPAR® INSPIRES VEHICLE OWNERS WITH INNOVATIVE PARTS AND ACCESSORIES — ALL MADE-TO-SPEC FOR YOUR 200 CONVERTIBLE. THIS IS WHAT MOPAR DELIVERS, ALONG WITH EXPERT, CARING SERVICE. MOPAR TECHNICIANS ARE THE MASTERS OF YOUR MAKE AND MODEL, WITH ACCESS TO THE TOOLS AND DIAGNOSTIC EQUIPMENT THAT HELP GET THE JOB DONE EFFICIENTLY. CHOOSE AUTHENTIC MOPAR PARTS AND SERVICE, AND YOU’LL DRIVE AWAY WITH PEACE OF MIND. FIND OUT MORE AT [MOPAR.COM](http://MOPAR.COM)



# OPTIONS AND PACKAGES

	TOURING	LIMITED	S
<b>ENGINE/TRANSMISSION</b>			
2.4L I-4 16V DOHC VVT WORLD ENGINE – 6-speed automatic	29V		
3.6L FLEX FUEL VVT V6 – 6-speed automatic	27V	27W	27S
<b>MECHANICAL</b>			
ALTERNATOR – 140-amp	S		
– 160-amp (included with 3.6L V6 engine)	O	S	S
BATTERY – 525-amp, maintenance-free	S	S	S
BRAKE/PARK INTERLOCK – Included with 6-speed automatic transmission	S	S	S
BRAKES – Four-wheel disc ABS	S	S	S
ENGINE BLOCK HEATER	O	O	O
REMOTE START SYSTEM – Included with Cold Weather Group	P	S	S
SPEED CONTROL – Electronic with stalk-mounted controls	S	S	S
SPEEDOMETER – 120-mph, with tachometer	S	S	S
STABILIZER BARS – Front and rear	S	S	S
STEERING – Power, rack-and-pinion	S	S	S
SUSPENSION – Touring	S	S	S
<b>EXTERIOR FEATURES</b>			
ANTENNA – Removable short mast	S	S	S
DOOR HANDLES – Body-color	S		S
– Bright		S	
EXHAUST TIPS – Dual, bright (included with 3.6L V6 engine)	P	S	S
FOG LAMPS		S	S
FUEL TANK – 16.9-gallon	S	S	S
GLASS – Tinted	S	S	S
– Laminated windshield	S	S	S
GRILLE – Dark Argent with bright accents	S	S	
– Black/bright 200 S grille with Black finish			S
HARD TONNEAU COVER	S	S	S
HEADLAMPS – Bifunctional halogen projector with headlamps-off time delay feature	S	S	S
– Automatic headlamps	S	S	S
– Headlamps with Black treatment			S
HOOD INSULATION	S	S	S
MIRRORS – Foldaway	S	S	S
– Power, heated, body-color	S		S
– Power, heated, bright		S	
TIRES – P225/55R17 BSW All-Season Touring	S		
– P225/50R18 BSW All-Season Touring		S	S
– Compact spare	S	S	S
TOPS – Power, cloth with remote top down on key fob	S	S	S
– Power, retractable hardtop with remote top down on key fob		O	O
TRUNK LID POWER RELEASE	S	S	S
WHEELS – 17-inch aluminum	S		
– 18-inch aluminum polished		S	
– 18-inch aluminum polished and Black painted			S
– 18-inch aluminum painted	O		
WINDSHIELD WIPERS – Variable intermittent	S	S	S
<b>INTERIOR FEATURES</b>			
AIR CONDITIONING WITH AUTOMATIC TEMPERATURE CONTROL	S	S	S
AIR FILTRATION SYSTEM	S	S	S
ANALOG CLOCK	S	S	S
CONSOLE – Floor with fore/aft sliding armrest, with dual storage compartments	S	S	S
DEFROSTER – Rear window	S	S	S
DOOR LOCKS – Power	S	S	S
DOOR SILL SCUFF PADS – Black	S		S
– Silver		S	

	TOURING	LIMITED	S
<b>INTERIOR FEATURES (Continued)</b>			
<b>INSTRUMENT CLUSTER</b> – With LED lighting and display screen	S	S	S
<b>FLOOR MATS</b> – Luxury front and rear	S	S	S
<b>GLOVEBOX</b> – Locking	S	S	S
<b>HOMELINK® UNIVERSAL GARAGE DOOR OPENER</b>	S	S	S
<b>MIRRORS</b> – Rearview, day/night with reading lamps	S	S	S
– Rearview, auto-dimming with microphone (included with Uconnect® Phone)	P	S	S
– Visor/vanity mirror	S	S	S
<b>POWER TOP- AND WINDOWS-DOWN WITH KEY FOB</b>	S	S	S
<b>STEERING WHEEL</b> – Leather-wrapped	S	S	
– Perforated leather			S
– Audio controls	S	S	S
<b>TEMPERATURE AND COMPASS GAUGE</b>	S	S	S
<b>WINDOWS</b> – Power, driver's and front-passenger with one-touch down	S	S	S
<b>SEATING</b>			
– Premium cloth bucket seats	S		
– Premium leather-trimmed bucket seats		S	
– Premium leather-trimmed bucket seats with digital suede			S
– Power 6-way driver and front-passenger seats	S	S	S
– Heated (included with Cold Weather Group)	P	S	S
– Manual driver lumbar adjuster	S	S	S
<b>UCONNECT®</b>			
– Media Center 130 AM/FM radio with CD/MP3 format capability, audio jack, and steering wheel music controls. Optional: Uconnect Voice Command with Bluetooth®, Bluetooth streaming audio, USB port for media devices, SiriusXM™ Satellite Radio <sup>(2)</sup> with one-year trial included, premium audio system, and rear seat entertainment capable (select vehicles)	S		
– Media Center 430 AM/FM radio with CD/DVD/MP3 format capability, audio jack, and 40GB HDD (28GB available) with USB port for uploading files, 6.5-inch touch screen for displaying music info and uploaded pictures, steering wheel music controls. Optional: Uconnect Voice Command with Bluetooth®, Bluetooth streaming audio, additional USB port for media devices, SiriusXM Satellite Radio <sup>(2)</sup> with one-year trial included, premium audio system, rear seat entertainment capable (select vehicles)	O	S	S
– Media Center 730N AM/FM radio with CD/DVD/MP3 format capability, audio jack, 40GB HDD (20GB available) with USB port for uploading files, Uconnect Voice Command with Bluetooth®, Bluetooth streaming audio, and additional USB port for media devices, 6.5-inch touch screen for displaying music info and uploaded pictures, steering wheel music controls, enhanced GPS Navigation, SiriusXM Satellite Radio <sup>(2)</sup> , Travel Link™ and Traffic™ with one-year trial included. Optional: premium audio system, rear seat entertainment capable (select vehicles)		O	O
– SiriusXM Satellite Radio <sup>(2)</sup> system with one-year subscription	S	S	S
<b>SOUND SYSTEMS</b> – Six speakers	S	S	
– Six Boston Acoustics® speakers		O	S
<b>SAFETY AND SECURITY</b>			
<b>ACTIVE HEAD RESTRAINTS<sup>(3)</sup></b> – Front	S	S	S
<b>AIR BAGS<sup>(4)</sup></b> – Front advanced multistage driver and passenger	S	S	S
– Supplemental front-seat mounted	S	S	S
<b>CHILD SEAT ANCHOR SYSTEM (LATCH)</b>	S	S	S
<b>ELECTRONIC STABILITY CONTROL<sup>(5)</sup></b> – With Brake Assist and all-speed traction control	S	S	S
<b>INSIDE EMERGENCY TRUNK LID RELEASE</b>	S	S	S
<b>REMOTE KEYLESS/ILLUMINATED ENTRY</b>	S	S	S
<b>SEAT BELTS</b> – Front three-point with shoulder adjustment	S	S	S
– Rear, outboard and center three-point	S	S	S
<b>SECURITY ALARM</b>	S	S	S
<b>SENTRY KEY® THEFT DETERRENT SYSTEM</b>	S	S	S
<b>TIRE PRESSURE MONITORING SYSTEM</b> – Included in the traveller/mini trip computer, displays individual tire pressure for all four tires	S	S	S
<b>UCONNECT® PHONE</b> – Includes Voice Command and rearview auto-dimming mirror with microphone	O	S	S
<b>PACKAGES</b>			
<b>COLD WEATHER GROUP</b> – Includes heated front seats and remote start	O		
<b>SMOKER'S GROUP</b> – Removable ashtray, cigar lighter	O	O	O

S = Standard. O = Optional. P = Included as part of package.



17-INCH ALUMINUM WHEEL Standard on Touring.



18-INCH CAST ALUMINUM WHEEL WITH PAINTED SATIN SILVER FINISH  
Optional on Touring.



18-INCH POLISHED ALUMINUM WHEEL Standard on Limited.



18-INCH POLISHED ALUMINUM WHEEL WITH BLACK PAINTED POCKETS  
Standard on S.

## WARRANTIES

Chrysler vehicles are covered by a Chrysler Group LLC 3-Year or 36,000-Mile Basic Limited Warranty (excludes normal maintenance and wear items), as well as a 5-Year or 100,000-Mile Powertrain Limited Warranty that is fully transferable and includes towing to an authorized dealer. Ask your dealer for details and a copy of these limited warranties.

## AUTHENTIC CHRYSLER ACCESSORIES BY MOPAR®

Are designed specifically for your Chrysler vehicle for exceptional fit, finish, and performance. Visit your dealership or [mopar.com](http://mopar.com).

## AUTOMOBILITY

Chrysler Group LLC's Automobility program provides aftermarket reimbursement incentives on adaptive vehicle uplift equipment in order to help provide safe and reliable vehicle modifications to enhance accessibility for all people. For more information, call (800) 255-9877 or visit [chryslerautomobility.com](http://chryslerautomobility.com).

## UCONNECT™

With Uconnect, you're always connected — to people, places, music, movies, and the Internet.

## Sirius XM™ SATELLITE RADIO

SiriusXM Satellite Radio delivers over 130 channels, including 100% commercial-free music, sports, news, talk, entertainment, traffic and weather. Factory-installed SiriusXM Satellite Radio includes a one-year subscription. For more information, go to [sirius.com](http://sirius.com).

## CHRYSLER SERVICE CONTRACTS

Chrysler Group LLC has a vested interest in your satisfaction and owner experience with your new Chrysler vehicle. Chrysler Group LLC Service Contracts offer extended service plans to help ensure that you'll enjoy your vehicle for many years down the road — for just pennies a day. For more information on comprehensive vehicle coverage, see your Chrysler dealer, call (800) 442-2666, or visit [chrysler.com/csc](http://chrysler.com/csc).

## THE CHRYSLER COLLECTION

Display your affection for striking style with merchandise to complement an active lifestyle. From trendy apparel to conversation pieces for home, office, and travel, visit [chrysler.com/collection](http://chrysler.com/collection).

## JOIN IN

Join fellow enthusiasts and tell your story by posting comments, participating in discussions, and sharing your Chrysler vehicle photos and videos. Join our community on Facebook ([facebook.com/Chrysler](http://facebook.com/Chrysler)), follow us on Twitter ([twitter.com/Chrysler](http://twitter.com/Chrysler)), and check us out on YouTube ([youtube.com/TheChryslerChannel](http://youtube.com/TheChryslerChannel)). Thank you for following.

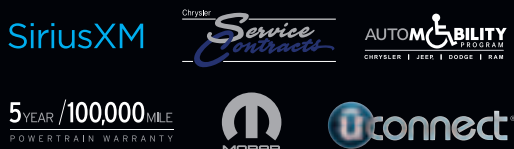
## iPAD™ APPS



Take an engaging, touch-based multimedia tour when you visit the Chrysler Group LLC iTunes® page on your Apple iPad. Download these apps to experience visual and interactive demonstrations of the entire Chrysler Group LLC vehicle lineup.



Earn 3 points on qualifying purchases made at Chrysler Group LLC dealerships, 2 points per \$1 on qualifying travel purchases and 1 point per \$1 on qualifying purchases everywhere else with the new Chrysler® MasterCard.® Points may be redeemed at your local dealership for cash off your new or used vehicle, accessories, parts, or service — including your next oil change. Or choose from hundreds of other rewards, including travel, cash back to your account, merchandise, or gift cards.® For more information or to apply, visit [ChryslerCard.com](http://ChryslerCard.com).



<sup>®</sup>Based on latest available competitive information and Chrysler Group LLC Standard Convertible segment. <sup>™</sup>Sirius services require subscriptions, sold separately after 12-month trial included with vehicle purchase/lease. Subscriptions governed by SiriusXM Customer Agreement at [siriusxm.com](http://siriusxm.com). If you decide to continue your SiriusXM service at the end of your complimentary trial, the plan you choose will automatically renew and bill at then-current rates until you call SiriusXM at 1-866-635-2349 to cancel. SiriusXM U.S. satellite service available only to those at least 18 years of age in the 48 contiguous United States and D.C., with Sirius also available in PR. Go to [www.siriusxm.com/traffic](http://www.siriusxm.com/traffic) for available coverage. © 2011 SiriusXM Radio Inc. <sup>®</sup>No system, no matter how sophisticated, can repeal the laws of physics or overcome careless driving actions. Performance is limited by available traction, which snow, ice, and other conditions can affect. When the ESC warning lamp flashes, the driver needs to use less throttle and adapt speed and driving behavior to prevailing road conditions. Always drive carefully, consistent with conditions. Always wear your seat belt. <sup>®</sup>The advanced front air bags in this vehicle are certified to the new U.S. federal regulations for advanced air bags. Children 12 years old and younger should always ride buckled up in a rear seat. Infants in rear-facing child restraints should never ride in the front seat of a vehicle with a passenger front air bag. All occupants should always wear their lap and shoulder belts properly. <sup>®</sup>Always sit properly with the head restraint properly adjusted. Never place anything in front of the head restraint. <sup>®</sup>Phone must support Bluetooth Phone Book Access Profile (PBAP). <sup>™</sup>Uconnect Web feature is not intended for use by the driver while the vehicle is in motion. Always drive carefully. Subscription required. <sup>®</sup>Complete details, including restrictions, limitations, and exclusions, will be available when you become a Cardmember.

This brochure is a publication of Chrysler Group LLC. All product illustrations and specifications are based upon current information at the time of publication approval. Chrysler Group LLC reserves the right to make changes from time to time, without notice or obligation, in prices, specifications, colors, materials and to change or discontinue models, which are considered necessary to the purpose of product improvement or for reasons of design and/or marketing. Chrysler, Mopar, Pentastar, Sentry Key and Uconnect are registered trademarks and Imported From Detroit is a trademark of Chrysler Group LLC. Bluetooth is a registered trademark of Bluetooth SIG, Inc. Boston Acoustics is a registered trademark of Boston Acoustics, Inc. Facebook is a registered trademark of Facebook, Inc. HomeLink is a registered trademark owned by Johnson Controls, Inc. iTunes and iPod are registered trademarks and iPad is a trademark of Apple Inc. Katzkin is a registered trademark of Katzkin Leather Interiors, Inc. MasterCard is a registered trademark of MasterCard International Incorporated. This card is issued by First Bankcard, a division of First National Bank of Omaha, pursuant to a license by MasterCard International Incorporated. Sirius, XM and all related marks and logos are trademarks of SiriusXM Radio Inc. and its subsidiaries. The Twitter name, logo, Twitter T, Tweet, and Twitter bird are trademarks of Twitter, Inc. in the United States and other countries. YouTube is a registered trademark of Google Inc.



BRIGHT WHITE



BLACKBERRY PEARL



CRYSTAL BLUE PEARL



DEEP CHERRY RED  
CRYSTAL PEARL



DEEP AUBURN



TUNGSTEN METALLIC



BRIGHT SILVER METALLIC

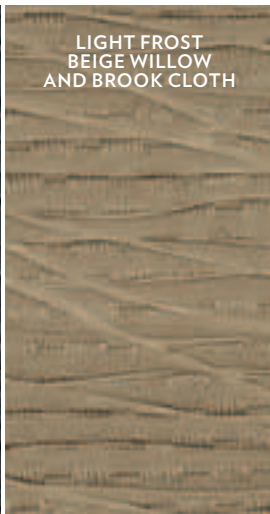


BLACK

EXTERIOR COLORS  
INTERIOR SEAT COLORS



BLACK WILLOW AND  
BROOK CLOTH



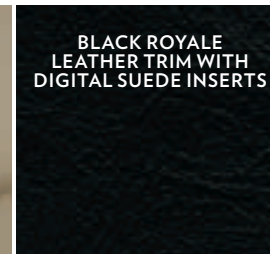
LIGHT FROST  
BEIGE WILLOW  
AND BROOK CLOTH



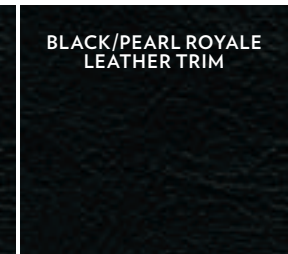
BLACK ROYALE  
LEATHER TRIM



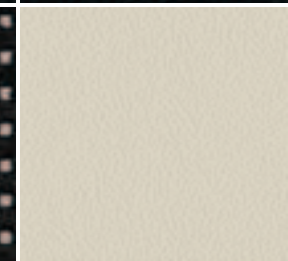
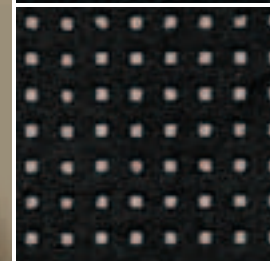
LIGHT FROST BEIGE  
ROYALE LEATHER TRIM



BLACK ROYALE  
LEATHER TRIM WITH  
DIGITAL SUEDE INSERTS



BLACK/PEARL ROYALE  
LEATHER TRIM



CHRYSLER



IMPORTED FROM DETROIT™

1800 CHRYSLER | [CHRYSLER.COM](http://CHRYSLER.COM)

CHRYSLER IS A REGISTERED TRADEMARK OF CHRYSLER GROUP LLC.

74-383-2230

CHRYSLER



IMPORTED FROM DETROIT®

THE 2013  
CHRYSLER  
**200**  
CONVERTIBLE

1800 CHRYSLER | CHRYSLER.COM

CHRYSLER IS A REGISTERED TRADEMARK OF CHRYSLER GROUP LLC.

74-383-2310

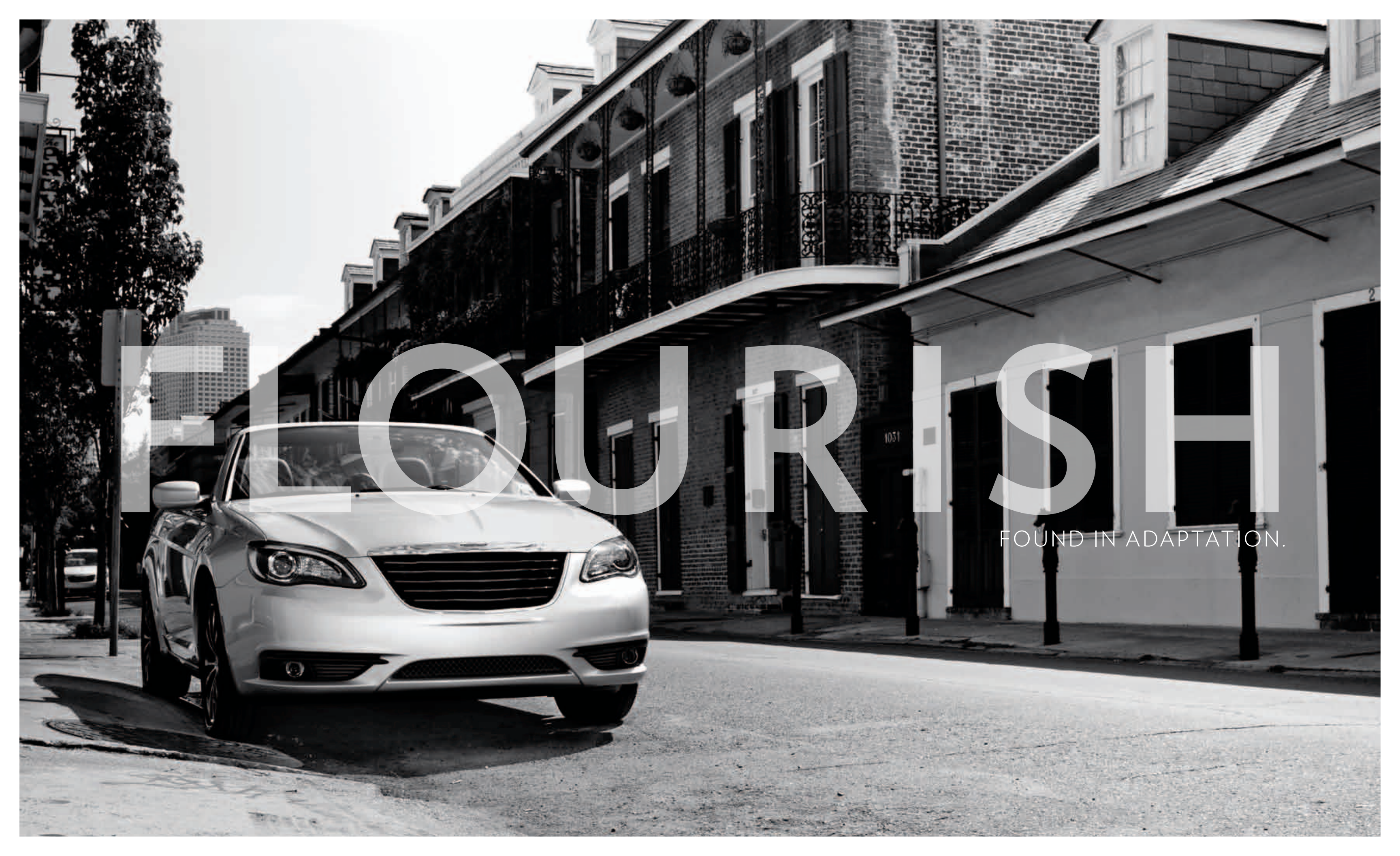
CHRYSLER



2013 200 CONVERTIBLE

IMPORTED FROM DETROIT®



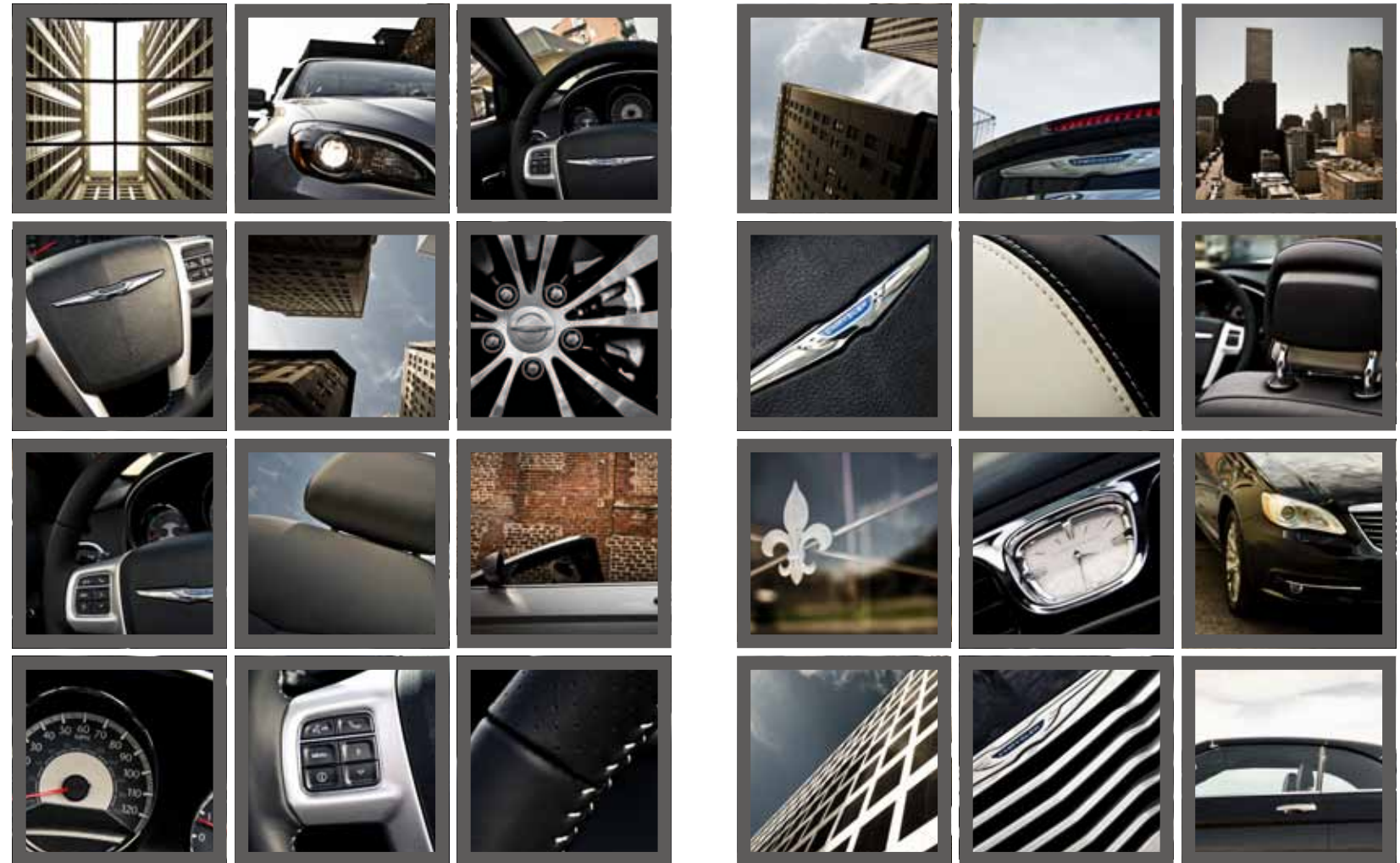


# FLORISH

FOUND IN ADAPTATION.

IT'S THE REWARD THAT COMES WITH KNOWING YOU'VE WORKED AN HONEST DAY. A LONG WEEK. THAT FEELING OF A JOB WELL DONE, APPRECIATING THE TIME YOU PUT IN, TO TAKE IT OFF. TAKE IT OUT. YOU DESERVE IT. AND YOU DESERVE A CONVERTIBLE THAT SAYS YOU KNOW SOMETHING ABOUT VALUE, ABOUT RESPONSIBILITY, ABOUT FUN, AND ABOUT STYLE. THIS ISN'T A CONVERTIBLE THAT KEEPS YOU WORKING; IT'S SIMPLY THE ONE THAT WORKS FOR YOU. THE ONE YOU CAN SHARE THE RIDE WITH AND TAKE ALONG MORE. TAKE FREEDOM AND PROSPER.

THE CHRYSLER 200 CONVERTIBLE.  
IMPORTED FROM DETROIT.®



RISE.

TAKE THE BEST OF BOTH WORLDS — BIG AND EASY. It's about knowing the value of your time and having a choice of what to do with it. Some decisions are just made easier than others. Like the Chrysler 200 Convertible, which offers two different power tops to fit your lifestyle. A classic power cloth soft top easily folds into the trunk, making it simple to enjoy open-air driving. The available retractable steel hardtop combines the fun of a convertible with the practicality of a conventional sedan. Both feature a seamless look when lowered, thanks to a power hard tonneau cover. It's the freedom of choice and power that comes standard on the Chrysler 200 Convertible. Take your turn.



200 CONVERTIBLE IS THE ONLY VEHICLE IN ITS CLASS TO OFFER A RETRACTABLE HARDTOP.\*

\* A NOTE ABOUT THIS BROCHURE: All disclaimers and disclosures can be found in the back of the brochure.

GO OUT AND TAKE IT IN.




**SWITCH IT UP.** Experience the power of superior design when you choose from the standard cloth soft top or the available retractable steel hardtop. In both soft and hard forms, the power convertible top folds in three sections and automatically latches with a switch on the center console or the press of a button on the key fob. Each takes approximately 30 seconds to raise or retract while an automatic hard cover conceals the stowage area when the top is down. When either top is down, the trunk capacity is still more than enough to easily fit two golf bags. Tightened flow-through design further enhances the feeling of floating on air.



**SMART MADE SIMPLE.** Also included is an automatic Smart Glass system. It protects the top weather strips and window seals by lowering the windows slightly whenever the convertible top is lowered or when the doors are opened or closed. When the door handle is pulled, the windows lower approximately half an inch, preventing resistance or damage to the window or top weather strips as the door opens. Once the door is closed, the window fully closes.





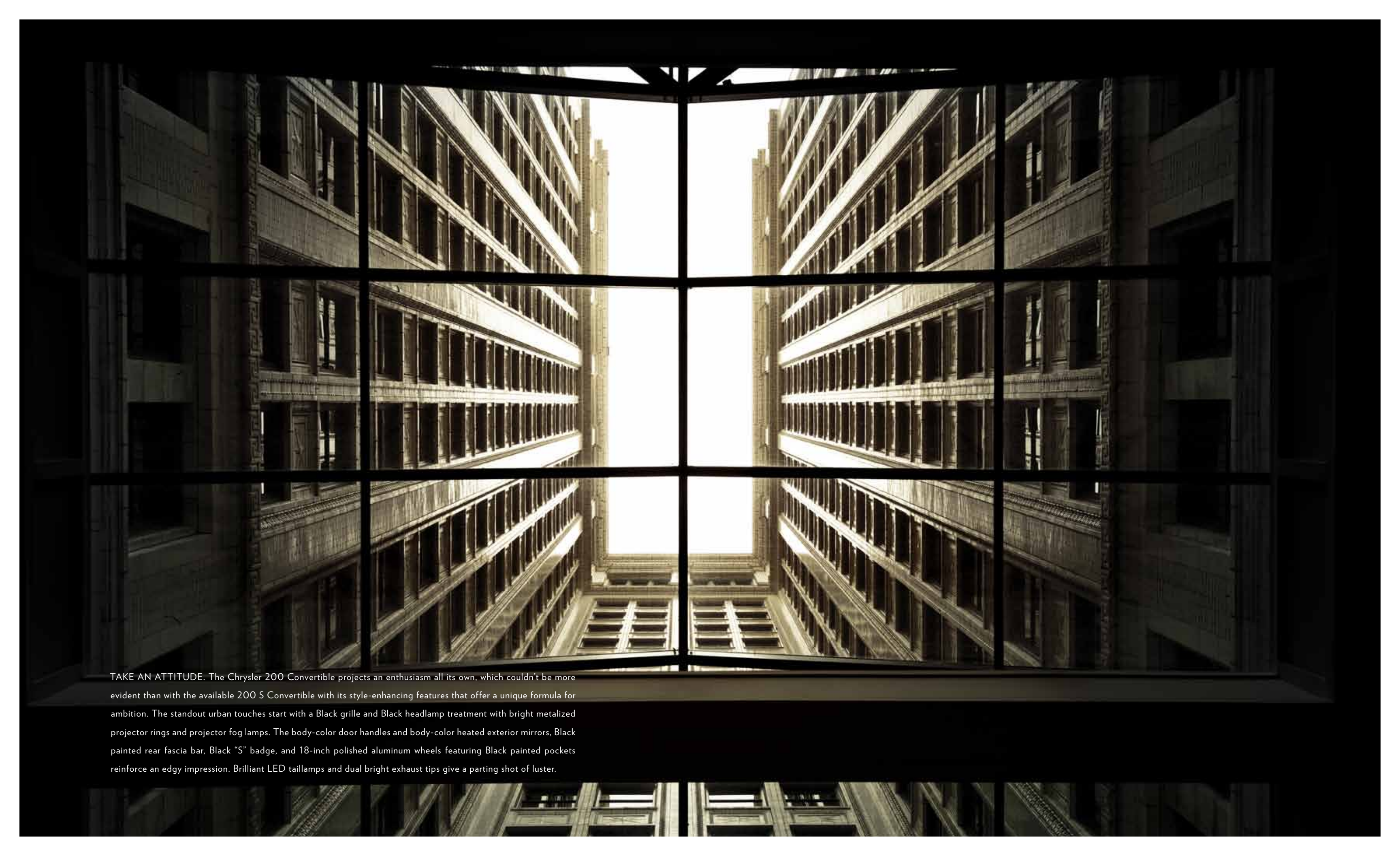
TAKE THE INTERIOR ADVANTAGE. The 200 S Convertible takes it up a few more notches by taking that attitude inside. It features Black leather-trimmed seating accented in Silver stitching with distinctive digital suede inserts. The driver and front-passenger seats feature embroidered "S" graphics as a uniquely noticeable touch, and a perforated leather-wrapped steering wheel delivers an added dose of hearty handling. The S also just happens to include the 3.6L Pentastar® V6 engine with dual exhaust system for the boost to back up the boast.

IT TAKES A STRONG COMMITMENT  
TO PERFORMANCE AND EFFICIENCY SERIOUSLY.

283<sup>HP</sup> | 29<sup>HWY  
MPG\*</sup>  
PENTASTAR® V6 ENGINE

TAKE A LEAD. It is the most advanced six-cylinder engine ever produced by Chrysler Group LLC, and it just happens to be shared with its Chrysler 300 stablemate. The available 3.6L Pentastar® V6 with Variable Valve Timing (VVT) is paired with a six-speed automatic transmission with first-rate noise, vibration, and harshness control. The only thing better than numbers like 283 horsepower and 260 lb-ft of torque is the engine's durability-enhancing features that require very low maintenance. Its impressive EPA estimated 19 city/29 highway mpg provides a glimpse of restraint within its appetite for the open road. The standard 2.4L engine with VVT is mated to a six-speed automatic transmission with AutoStick. It provides a strong balance of fuel economy (EPA estimated 18 city/27 highway mpg) and solid performance with 173 horsepower.

\*Based on EPA estimated 19 city/29 hwy mpg, when equipped with 3.6 L Pentastar V6 engine with 6-speed automatic transmission.



TAKE AN ATTITUDE. The Chrysler 200 Convertible projects an enthusiasm all its own, which couldn't be more evident than with the available 200 S Convertible with its style-enhancing features that offer a unique formula for ambition. The standout urban touches start with a Black grille and Black headlamp treatment with bright metalized projector rings and projector fog lamps. The body-color door handles and body-color heated exterior mirrors, Black painted rear fascia bar, Black "S" badge, and 18-inch polished aluminum wheels featuring Black painted pockets reinforce an edgy impression. Brilliant LED taillamps and dual bright exhaust tips give a parting shot of luster.



**BREATHING ROOM.** The bolstered seats envelop you and your passengers with available leather-trimmed and cloth seating materials and six-way power driver and front-passenger seats. The soft-touch armrests, premium touch points, automatic temperature control, and LED ambient lighting provide comfort continuity. Share the life of leisure with seating for four and 'best-in-class' rear leg room; and whether the top is up or down, the spacious trunk allows everyone to bring their own share of wares.



**DRIVER'S CHOICE.** Enjoy this position the most with the intuitive flow of the one-piece instrument panel, bezels, gauges, and integrated controls on the standard leather-wrapped steering wheel. Operate the radio, cruise control, available hands-free phone, and other vehicle functions conveniently without having to change hand or eye placement. Innovative features that connect you to the outside world include an available Uconnect® touch screen with Voice Command and available SiriusXM Satellite Radio.<sup>2</sup> The convertible-top button is brilliantly located in the center console for easy access anytime.

STAY CONNECTED, ENTERTAINED, AND FOCUSED ON DRIVING.



**ENTERTAINMENT.** Manage all of your media with multiple ways to access audio, including Bluetooth® streaming audio, iPod® control with Voice Command, DVD player, auxiliary input jack, and compatible multimedia devices with SiriusXM Satellite Radio.<sup>2</sup> One year of SiriusXM Radio Service included.

**PHONE.** Uconnect® Phone is the in-vehicle, voice-activated communication system that allows you to pair up to seven Bluetooth compatible phones and then talk virtually hands-free. This system is clever enough to synchronize with your phone's contacts<sup>3</sup> — up to 1,000 entries.

**NAVIGATION.** Provides turn-by-turn voice guidance and visual display. It can also locate nearby restaurants, shopping, hospitals, or points of local interest through a GPS system. It features an intuitive user interface, bringing the handheld experience to a factory in-dash radio. With SiriusXM Traffic,<sup>2</sup> you'll get continuously detailed information on accidents, traffic flow, construction, and road closures.

**VOICE COMMAND.** It simplifies driving by letting you keep your eyes on the road and your hands on the wheel. Use your voice to select AM/FM radio stations, SiriusXM Satellite Radio<sup>2</sup> channels, and make calls.

**WEB.** Put the power of high-speed Internet in your vehicle with Uconnect Web,<sup>4</sup> making your vehicle a mobile hotspot. Passengers can use multiple devices at the same time. There's no need for cell cards or software with this Authentic Chrysler Accessory by Mopar. It's all wireless. Subscription required. Sold separately.

**SIRIUSXM TRAVEL LINK.<sup>2</sup>** Brings national weather forecasts, fuel prices at local gas stations, in-game and final sports scores, weekly sports schedules, local movie theater listings, and local ski conditions right to your vehicle.

**SIRIUS SELECT<sup>2</sup> — Over 130 channels.** This is what satellite radio is all about. Enjoy commercial-free music, plus sports, news, talk, and entertainment. And get a selection of premium programming, including every NFL game, Howard Stern, every NASCAR® race, Martha Stewart, and more. Visit [www.siriusxm.com](http://www.siriusxm.com) for details.

**GO TO [DRIVEUCONNECT.COM](http://DRIVEUCONNECT.COM) TO FIND OUT MORE.**





CALIBRATED FOR LIFE'S BUMPY ROADS.

**RIDE AND HANDLING.** Virtually every system for this convertible has been engineered for an exceptional performance experience. MacPherson struts sit up front to provide an optimum balance of ride, handling, and noise isolation. These are supported by multilink coils in the back, which allow individual articulation of the rear wheels over varying road surfaces for a level ride. Additional components include large-diameter front and rear sway bars, stiffened body mounts and soft ride rate, all paving the way for a smooth and controlled ride. These drivetrain and suspension enhancements also contribute to the reduction of noise, vibration, and harshness (NVH), while the premium 17- and 18-inch Touring tires provide solid balance and response.

**AUTOSTICK.** Paired with either the 2.4L four-cylinder engine or the available 3.6L Pentastar® V6 engine, the six-speed automatic transmission with standard AutoStick shifter allows clutchless manual or automatic gear selection for a dynamic driving experience.

**TAKE NOTICE.** The Chrysler grille and wing badge glimmer as sculpted front and rear fascias and aluminum wheels boast a fresh perspective from the onset. The standard body-color door handles and power heated mirrors streamline its presence while available brightwork gives a finish fit for its looks. Standard bifunctional halogen projector headlamps provide a wide, clear night vision with high/low beam capability and outstanding forward and spread-light performance. LED light piping accents the headlamps' premium appearance and illumination. The available projector beam fog lamps provide sharp visibility and looks, while the LED taillamps and center-mounted stoplamp's intense illumination means viewers take notice from every angle.



*Chrysler 200 S Convertible Shown in Billet Silver Metallic.*

ANTILOCK BRAKE SYSTEM/ABS. Standard four-wheel antilock disc brakes afford premium stopping power from state-of-the-art electronics that provide faster system response. ABS senses and prevents wheel lock-up, offering improved steering control under extreme braking and/or slippery conditions.

SENTRY KEY® THEFT DETERRENT SYSTEM. A unique security system code matched only to your vehicle allows your 200 Convertible to start only with the special encoded key.

SECURITY ALARM. This system monitors the door-ajar and trunk switches as well as the ignition circuit for unauthorized entry. The lights flash and the horn sounds, alerting you if someone else is trying to enter your vehicle.

REMOTE KEYLESS/ILLUMINATED ENTRY. For additional convenience and security, this feature unlocks the driver's door on the first press of the key fob and all doors on the second press, lighting the interior once the vehicle is unlocked.

ELECTRONIC STABILITY CONTROL (ESC).<sup>5</sup> In adverse conditions, ESC and Brake Assist work with an all-speed traction control system to help maintain vehicle stability, limit oversteering or understeering, and automatically apply brake force when needed.

AIR BAGS.<sup>6</sup> All 200 Convertible models feature standard advanced multistage driver and front-passenger air bags,<sup>6</sup> and supplemental driver and front-passenger-seat mounted air bags.<sup>6</sup>

ACTIVE FRONT HEAD RESTRAINTS.<sup>7</sup> Head restraints automatically move forward and upward in the event of a rear-end collision to decrease the space between the head restraint and the occupant's head, helping to reduce the chance of injury.

TIRE PRESSURE MONITORING SYSTEM. A warning lamp in the instrument cluster notifies you of low tire pressure. A Tire Pressure Monitoring Display alerts you to individual tire pressure for all four tires and is part of the available Electronic Vehicle Information Center (EVIC).

SPECIFICALLY DESIGNED FRONT AND REAR CRUMPLE ZONES HELP ABSORB ENERGY AND REDIRECT IT AWAY FROM PASSENGERS.

BUILT WITH A LEVEL OF CONFIDENCE  
STAMPED IN STEEL.

THEY HELP TO REDUCE THE RISK OF INJURY IN THE EVENT OF A COLLISION.



**MAKE IT YOURS.**  
AUTHENTIC CHRYSLER  
ACCESSORIES BY MOPAR.

WITH YOU EVERY MILE. Mopar® is with you from the moment you take possession of your new Chrysler 200 Convertible and for every mile thereafter. It helps to further your vehicle's distinction with accessories of every kind. They are designed by the same engineers of your vehicle and made specifically for your model. It's get-it-right-the-first-time satisfaction with seamless fit and finish, exact color matches, and high-quality materials that have been thoroughly tested.

Mopar also assures you with expert technicians who know your make and model best from Vehicle Protection Plans and Express Lane Service to Mopar Owner Connect, a secure owners-only site, accessible by registering at [owners.chrysler.com](http://owners.chrysler.com). There, you'll enjoy online access to service records, extensive vehicle information, and much more. Learn more about the world of Mopar and all it has to offer at [mopar.com](http://mopar.com). See your Chrysler dealer for the latest accessories and parts available.



(Left to right, top to bottom) Illuminated Door Sill Guards – Hitch-Mount Bike Carrier – Katzkin® Leather Interiors – Ambient Light Kit – KICKER® Sound Systems – Uconnect Web.<sup>4</sup>

# OPTIONS AND PACKAGES

	Touring	Limited	“S”
<b>ENGINE/TRANSMISSION</b>			
<b>2.4L I-4 16V DOHC VVT WORLD ENGINE</b> – 6-speed automatic	29V		
<b>3.6L FLEX FUEL VVT V6</b> – 6-speed automatic	27V	27W	27S
<b>MECHANICAL</b>			
<b>ALTERNATOR</b> – 140-amp	S		
– 160-amp (included with 3.6L V6 engine)	O	S	S
<b>BATTERY</b> – 525-amp, maintenance-free	S	S	S
<b>BRAKE/PARK INTERLOCK</b> – Included with 6-speed automatic	S	S	S
<b>BRAKES</b> – Four-wheel disc ABS	S	S	S
<b>ENGINE BLOCK HEATER</b>	O	O	O
<b>REMOTE START SYSTEM</b> – Included with Cold Weather Group	P	S	S
<b>SPEED CONTROL</b> – Electronic with stalk-mounted controls	S	S	S
<b>SPEEDOMETER</b> – 120-mph, with tachometer	S	S	S
<b>STABILIZER BARS</b> – Front and rear	S	S	S
<b>STEERING</b> – Precision power	S	S	S
<b>SUSPENSION</b> – Tuned	S	S	S
<b>EXTERIOR FEATURES</b>			
<b>ANTENNA</b> – Removable short mast	S	S	S
<b>DOOR HANDLES</b> – Body-color	S		S
– Bright		S	
<b>EXHAUST TIPS</b> – Dual, bright (included with 3.6L V6 engine)	P	S	S
<b>FOG LAMPS – PROJECTOR</b>		S	S
<b>FUEL TANK</b> – 16.9-gallon	S	S	S
<b>GLASS</b> – Tinted	S	S	S
– Acoustic windshield	S	S	S
<b>GRILLE</b> – Dark Argent with bright accents	S	S	
– Black S grille finish			S
<b>HARD TONNEAU COVER</b>	S	S	S
<b>HEADLAMPS</b> – Bifunctional halogen projector with headlamps-off time-delay feature	S	S	S
– Automatic headlamps	S	S	S
– Headlamps with Black treatment			S
<b>HOOD INSULATION</b>	S	S	S
<b>MIRRORS</b> – Foldaway	S	S	S
– Power, heated, body-color	S		S
– Power, heated, bright		S	
<b>TIRES</b> – P225/55R17 BSW All-Season Touring	S		
– P225/50R18 BSW All-Season Touring		S	S
– Compact spare	S	S	S
<b>TOPS</b> – Power, cloth with remote top-down on key fob	S	S	S
– Power, retractable hardtop with remote top-down on key fob		O	O
<b>TRUNK LID POWER RELEASE</b>	S	S	S
<b>WHEELS</b> – 17-inch machined cast aluminum	S		
– 18-inch polished aluminum		S	
– 18-inch polished aluminum wheel with Black painted pockets			S
– 18-inch cast aluminum with painted satin Silver finish	O		
<b>WINDSHIELD WIPERS</b> – Variable intermittent	S	S	S
<b>INTERIOR FEATURES</b>			
<b>AIR CONDITIONING WITH AUTOMATIC TEMPERATURE CONTROL</b>	S	S	S
<b>AIR FILTRATION SYSTEM</b>	S	S	S
<b>ANALOG CLOCK</b>	S	S	S
<b>CONSOLE</b> – Floor with fore/aft sliding armrest, with dual storage compartments	S	S	S
<b>DEFROSTER</b> – Rear window	S	S	S
<b>DOOR LOCKS</b> – Power	S	S	S

	Touring	Limited	“S”
<b>INTERIOR FEATURES (Continued)</b>			
<b>DOOR SILL SCUFF PADS</b> – Black	S		S
– Silver		S	
<b>INSTRUMENT CLUSTER</b> – With LED lighting and display screen	S	S	S
<b>FLOOR MATS</b> – Luxury front and rear	S	S	S
<b>GLOVEBOX</b> – Locking	S	S	S
<b>HOMELINK® UNIVERSAL GARAGE DOOR OPENER</b>	S	S	S
<b>MIRRORS</b> – Rearview, day/night with reading lamps	S		
– Rearview, auto-dimming with microphone (included with Uconnect® Phone)	P	S	S
– Visor/vanity mirror	S	S	S
<b>POWER TOP- AND WINDOWS-DOWN WITH KEY FOB</b>	S	S	S
<b>STEERING WHEEL</b> – Leather-wrapped	S	S	
– Perforated leather			S
– Audio controls	S	S	S
<b>TEMPERATURE AND COMPASS GAUGE</b>	S	S	S
<b>WINDOWS</b> – Power, driver and front-passenger with one-touch down	S	S	S
<b>SEATING</b>			
– Premium cloth bucket seats	S	O	
– Premium leather-trimmed bucket seats		S	
– Premium leather-trimmed bucket seats with digital suede			S
– Power 6-way driver and front-passenger seats	S	S	S
– Heated (included with Cold Weather Group)	P	S	S
– Manual driver lumbar adjuster	S	S	S
<b>UCONNECT®</b>			
– Uconnect 130 AM/FM radio with CD/MP3 format capability, audio jack, and steering wheel music controls. Optional: Uconnect Voice Command with Bluetooth, <sup>1</sup> Bluetooth streaming audio, USB port for media devices, and SiriusXM Satellite Radio <sup>2</sup> with one-year trial included.	S		
– Uconnect 430 AM/FM radio with CD/DVD/MP3 format capability, audio jack, and 40GB HDD (28GB available) with USB port for uploading files, 6.5-inch touch screen for displaying music info and uploaded pictures, steering wheel music controls, Uconnect Voice Command with Bluetooth, Bluetooth streaming audio, additional USB port for media devices, SiriusXM Satellite Radio <sup>2</sup> with one-year trial included.	O	S	S
– Uconnect 730N AM/FM radio with CD/DVD /MP3 format capability, audio jack, 40GB HDD (20GB available) with USB port for uploading files, Uconnect Voice Command with Bluetooth, Bluetooth streaming audio, and additional USB port for media devices, 6.5-inch touch screen for displaying music info and uploaded pictures, steering wheel music controls, enhanced GPS Navigation, SiriusXM Satellite Radio, <sup>2</sup> Travel Link, and Traffic, with one-year trial included.		O	O
– SiriusXM Satellite Radio <sup>2</sup> system with one-year subscription	S	S	S
<b>SOUND SYSTEMS</b> – Six speakers	S	S	
– Six Boston Acoustics® speakers		O	S
<b>SAFETY AND SECURITY</b>			
<b>ACTIVE HEAD RESTRAINTS<sup>7</sup></b> –Front	S	S	S
<b>AIR BAGS<sup>8</sup></b> – Front advanced multistage driver and passenger	S	S	S
– Supplemental front seat-mounted	S	S	S
<b>CHILD SEAT ANCHOR SYSTEM (LATCH)</b>	S	S	S
<b>ELECTRONIC STABILITY CONTROL<sup>9</sup></b> – With Brake Assist and all-speed traction control	S	S	S
<b>INSIDE EMERGENCY TRUNK LID RELEASE</b>	S	S	S
<b>REMOTE KEYLESS/ILLUMINATED ENTRY</b>	S	S	S
<b>SEAT BELTS</b> – Front three-point with shoulder adjustment	S	S	S
– Rear, outboard	S	S	S
<b>SECURITY ALARM</b>	S	S	S
<b>SENTRY KEY® THEFT DETERRENT SYSTEM</b>	S	S	S
<b>TIRE PRESSURE MONITORING SYSTEM</b> – Included in the traveler/mini trip computer, displays individual tire pressure for all four tires	S	S	S
<b>UCONNECT® PHONE</b> – Includes Voice Command and rearview auto-dimming mirror with microphone, remote USB port, Bluetooth streaming audio	O	S	S
<b>PACKAGES</b>			
<b>COLD WEATHER GROUP</b> – Includes heated front seats and remote start	O		
<b>SMOKER'S GROUP</b> – Removable ashtray, cigar lighter	O	O	O

S = Standard, O = Optional, P = Included as part of package.



17-INCH MACHINE CAST ALUMINUM WHEEL  
Standard on Touring.



18-INCH POLISHED ALUMINUM WHEEL WITH BLACK  
PAINTED POCKETS Standard on S.



18-INCH CAST ALUMINUM WHEEL WITH PAINTED  
SATIN SILVER FINISH Optional on Touring.



18-INCH POLISHED ALUMINUM WHEEL Standard on Limited.

## THE CHRYSLER COLLECTION

Bring the Chrysler brand style and distinction to your lifestyle in and out of your vehicle with authentic professional, active, travel, and home accessories, apparel, and gift cards for your favorite Chrysler enthusiast. You'll also wear your pride-of-ownership attitude on your sleeve when you boast one of the popular Imported From Detroit® garments. Shop the complete collection to show you know what earned luxury is all about at [Chrysler.com/collection](http://Chrysler.com/collection).



### WARRANTIES

Chrysler vehicles are covered by a Chrysler Group LLC 3-Year or 36,000-Mile Basic Limited Warranty (excludes normal maintenance and wear items), as well as a 5-Year or 100,000-Mile Powertrain Limited Warranty that is fully transferable and includes Roadside Assistance Services: Flat Tire, Lockout, Towing, Out of Gas/Fuel Delivery, and Battery Jump Assistance. Ask your dealer for details and a copy of these limited warranties.

### AUTHENTIC CHRYSLER ACCESSORIES BY MOPAR.

Are designed specifically for your Chrysler vehicle for exceptional fit, finish, and performance. Visit your dealership or [mopar.com](http://mopar.com).

### AUTOMOBILITY

Chrysler Group LLC's Automobility Program provides aftermarket reimbursement incentives on adaptive vehicle upfit equipment in order to help provide safe and reliable vehicle modifications to enhance accessibility for all people. For more information, call (800) 255-9877 or visit [chryslerautomobility.com](http://chryslerautomobility.com).

### SiriusXM SATELLITE RADIO

SiriusXM Satellite Radio<sup>2</sup> delivers over 130 channels, including commercial-free music, sports, news, talk, entertainment, traffic, and weather. Factory-installed SiriusXM Satellite Radio includes a one-year subscription. For more information, go to [siriusxm.com](http://siriusxm.com).

### UCONNECT<sup>3</sup>

With Uconnect, you're always connected – to people, places, music, movies, and the Internet.






Earn 3 points on qualifying purchases made at Chrysler Group LLC dealerships, 2 points per \$1 on qualifying travel purchases, and 1 point per \$1 on qualifying purchases everywhere else with the new Chrysler MasterCard.<sup>®</sup> Points may be redeemed at your local dealership for cash off your new or used vehicle, accessories, parts, or service – including your next oil change. Or choose from hundreds of other rewards, including travel, cash back to your account, merchandise, or gift cards.<sup>8</sup> For more information or to apply, visit [ChryslerCard.com](http://ChryslerCard.com).


### CHRYSLER SERVICE CONTRACTS

Chrysler Group LLC has a vested interest in your satisfaction and owner experience with your new Chrysler vehicle. Chrysler Group Service Contracts offer extended service plans to help ensure that you'll enjoy your vehicle for many years down the road – for just pennies a day. For more information on comprehensive vehicle coverage, see your Chrysler dealer, call (800) 442-2666, or visit [chrysler.com/csc](http://chrysler.com/csc).

### JOIN IN

   Join fellow enthusiasts and tell your story by posting comments, participating in discussions, and sharing your Chrysler vehicle photos and videos. Join our community on Facebook ([facebook.com/Chrysler](http://facebook.com/Chrysler)), follow us on Twitter ([twitter.com/Chrysler](http://twitter.com/Chrysler)), and check us out on YouTube ([youtube.com/TheChryslerChannel](http://youtube.com/TheChryslerChannel)). Thank you for following.

### GO MOBILE

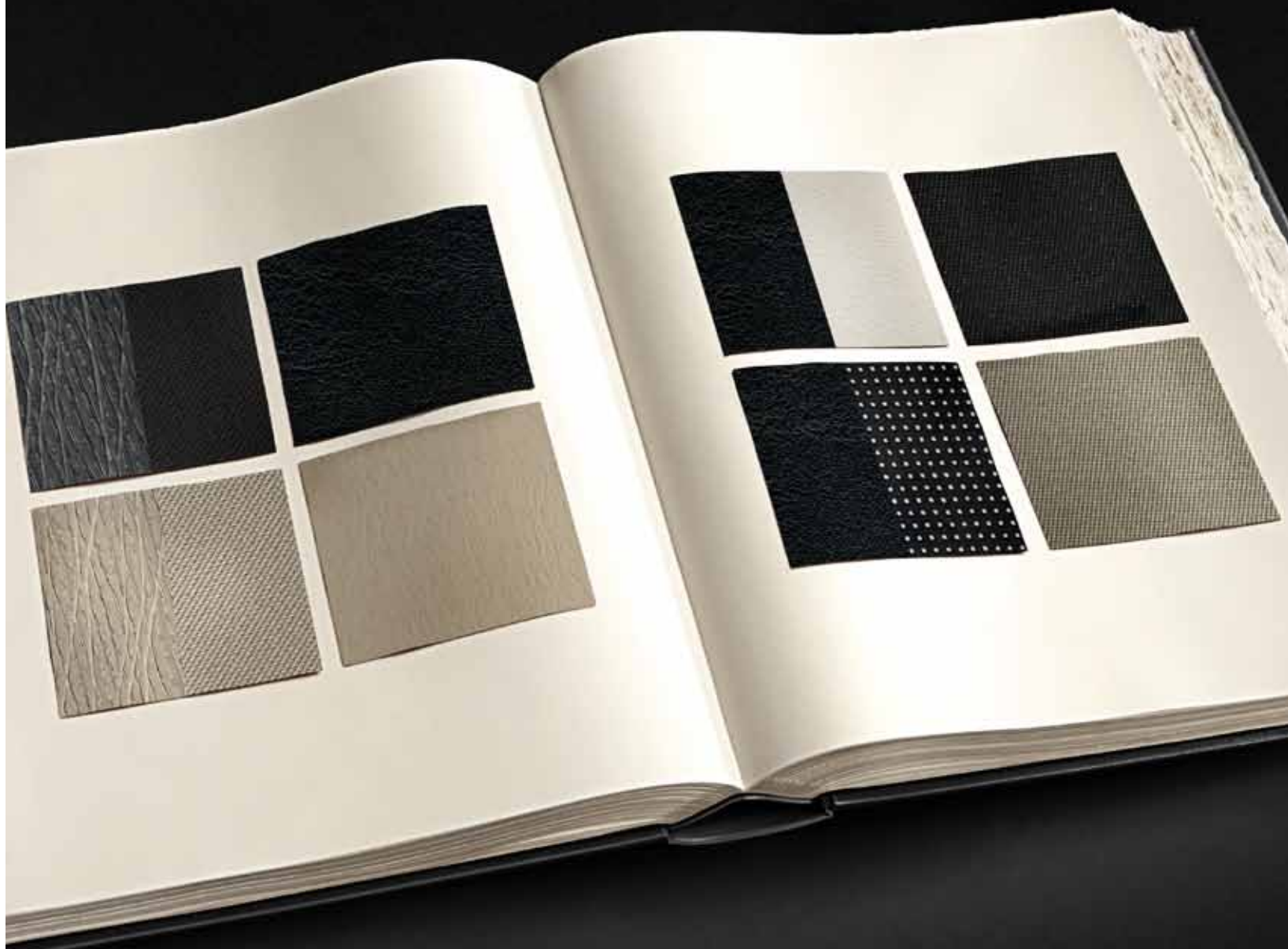
 Take an engaging, multimedia tour of your vehicle on your mobile device. Visit Chrysler Group LLC in iTunes<sup>®</sup> from your smartphone or iPad<sup>®</sup> to download the most up-to-date apps on all of the company's vehicles. Log on to the [Chrysler.com](http://Chrysler.com) mobile site for a comprehensive, at-a-glance review of what you need to know about your Chrysler vehicle. Experience visual and interactive demonstrations of the entire lineup, gaining access to product information at your fingertips, wherever you go.



(1)Based on latest available information of Chrysler Group LLC Standard Mid-Size Sedan segment. (2)SiriusXM service requires a subscription, sold separately, after 12-month trial included with vehicle purchase. If you decide to continue your SiriusXM service at the end of the trial subscription, the plan you choose will automatically renew and bill at the current rates until you call SiriusXM at 1-866-635-2349 to cancel. See our Customer Agreement for complete terms at [www.siriusxm.com](http://www.siriusxm.com). Sirius satellite service is available only to those at least 18 and older in the 48 contiguous United States, D.C., and P.R. (with coverage limitations). SiriusXM Traffic available in select markets. See [siriusxm.com/traffic](http://siriusxm.com/traffic) for more information. Sirius, XM and all related marks and logos are trademarks of Sirius XM Radio Inc. (3)Phone must support Bluetooth Phone Book Access Profile (PBAP). (4)Uconnect Web feature is not intended for use by the driver while the vehicle is in motion. Always drive carefully. Subscription required. (5)No system, no matter how sophisticated, can repeal the laws of physics or overcome careless driving actions. Performance is limited by available traction, which snow, ice, and other conditions can affect. When the ESC warning lamp flashes, the driver needs to use less throttle and adapt speed and driving behavior to prevailing road conditions. Always drive carefully, consistent with conditions. Always wear your seat belt. (6)The Advanced Front Air Bags in this vehicle are certified to the new U.S. federal regulations for advanced air bags. Children 12 years old and younger should always ride buckled up in a rear seat. Infants in rear-facing child restraints should never ride in the front seat of a vehicle with a passenger front air bag. All occupants should always wear their lap and shoulder belts properly. (7)Always sit properly with the head restraint properly adjusted. Never place anything in front of the head restraint. (8) Complete details, including restrictions, limitations, and exclusions, will be available when you become a Cardmember. MasterCard is a registered trademark of MasterCard International Incorporated. This card is issued by First Bankcard, a division of First National Bank of Omaha, pursuant to a license by MasterCard International Incorporated.

This brochure is a publication of Chrysler Group LLC. All product illustrations and specifications are based upon current information at the time of publication approval. Chrysler Group LLC reserves the right to make changes from time to time, without notice or obligation, in prices, specifications, colors, materials and to change or discontinue models, which are considered necessary to the purpose of product improvement or for reasons of design and/or marketing. Chrysler, Chrysler 200S, the Chrysler wing design, Imported from Detroit, Mopar, Pentastar, Sentry Key and Uconnect are registered trademarks of Chrysler Group LLC. Bluetooth is a registered trademark of Bluetooth SIG, Inc. Boston Acoustics is a registered trademark of Boston Acoustics, Inc. Facebook is a registered trademark of Facebook, Inc. HomeLink is a registered trademark owned by Johnson Controls, Inc. iPod, iPad, and iTunes are registered trademarks of Apple Inc. Katzin is a registered trademark of Katzin Leather Interiors, Inc. KICKER is a registered trademark of Stillwater Design and Audio, Inc. MasterCard is a registered trademark of MasterCard International Incorporated. This card is issued by First Bankcard, a division of First National Bank of Omaha, pursuant to a license by MasterCard International Incorporated. NASCAR is a registered trademark of the National Association for Stock Car Auto Racing, Inc. NFL is a registered trademark of the National Football League. Sirius, XM and all related marks and logos are trademarks of SiriusXM Radio Inc. and its subsidiaries. The Twitter name, logo, Twitter T, Tweet, and Twitter bird are trademarks of Twitter, Inc. in the United States and other countries. YouTube is a registered trademark of Google Inc.

INTERIOR COLORS



*BROOK AND WILLOW CLOTH*  
Black  
Light Frost

*ROYALE LEATHER TRIM*  
Black  
Light Frost

*BLACK / PEARL ROYALE LEATHER TRIM*  
  
*BLACK ROYALE LEATHER/ DIGITAL SUEDE INSERTS*

*CLOTH*  
Black  
Pebble



EXTERIOR COLORS

(Left to right, top to bottom) CASHMERE PEARL\* – BLACK – CRYSTAL BLUE PEARL\* – DEEP CHERRY RED CRYSTAL PEARL\* – DEEP AUBURN PEARL\* – TUNGSTEN METALLIC – TRUE BLUE PEARL\* – BRIGHT WHITE – BILLET SILVER METALLIC

\* Not available with S Packages. \*Late availability.



BLACK

TUNGSTEN METALLIC

BILLET SILVER METALLIC

TRUE BLUE PEARL\*

CRYSTAL BLUE PEARL\*

DEEP CHERRY RED CRYSTAL PEARL†

DEEP AUBURN PEARL\*

CASHMERE PEARL\*

BRIGHT WHITE



200 S Convertible Shown in Billet Silver Metallic.



