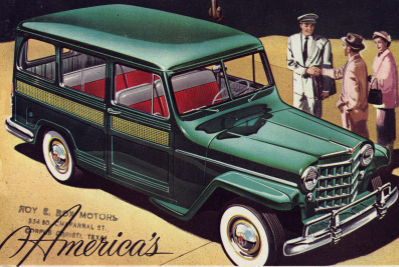


Ready
for Family
or Business

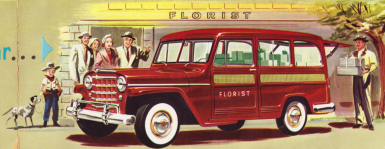
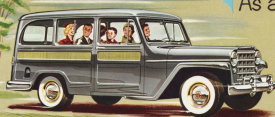


ROY E. BOY MOTORS
334 80 W. FARRAL ST.
CORPUS CHRISTI, TEXAS

America's
GREATEST ALL-PURPOSE CAR!

Choose *Willys Deluxe Station Wagon* For Double Value... For Double Duty

As a Comfortable Family Car...
As a Practical Utility Car...



For Sundays, you have the ideal car for taking the family or a group of neighbor children to Church or Sunday School — for a jaunt into the country.

Ideal for retired folks—for short or long trips. Helps stretch retirement funds with low price—low payments—extra low maintenance costs.



Sportsmen like this car for hunting, fishing trips. With tailgate down, 8 1/2' length permits sleeping bag comfort for two.



The Willys Deluxe Station Wagon is a great family car... useful in a score of ways... comfortable, safe, economical and very smart looking. It's a delight to handle on the road... in traffic... in parking. Big and roomy, it seats six adults with ample extra space for luggage. There is no better car for vacation trips. Stow in your outboard motor, sports gear, tent or sleeping bags. Full interior of car can be washed and cleaned.

During the week this Willys Deluxe Station Wagon can be valuable in your business... can help you make money around your home, farm, ranch, resort... in service facilities and hundreds of other ways. Ruggedly designed, it can provide a huge cargo space of over 100 cubic feet. Big mileage on regular gas, and low cost of operation make this the ideal 2-purpose car. Motor easy to reach for maintenance.

Cargo area is 4 feet high, almost 5 feet wide—8 1/2 feet long, with tailgate down. Flush with the floor. Offers over 100 cubic feet space with right-hand seat folded down and forward. Carries up to half-ton, with passengers.



Carpenters, plumbers, painters, photographers and service operators carry on their trades with this "double-duty" Station Wagon—have plenty of space for equipment.



Produce farmers can haul many crates of vegetables to market at very small operational cost. Rustic inside of car can be scrubbed and cleaned... easily... quickly.



Traveling salesman like the Willys Deluxe Station Wagon—with room for bulky sample cases and display items, because big economy in gas and maintenance is extra important.



"The 4-WHEEL DRIVE Station Wagon Gets You Through Where Other Cars Fail!"

CARRIES GUESTS OR PERSONNEL
OVER TRAILS...CROSS COUNTRY
WHERE OTHER VEHICLES
DARE NOT GO!

When the going is really tough—too rugged for other cars, the Willys Station Wagon, with 4-wheel drive, and extra high road clearance, gets you through, even up 60% grades... helps you meet schedules and keep delivery promises.

High, narrow, sturdy fenders permit close passage between objects... make tire changes easy, simple. With 4-wheel drive, power is transmitted equally to all four wheels. They work together... pull together, to provide

the extra driving traction needed to move the car through mud, sand, snow—up steep grades, over trails and rough open country impossible to most any conventional vehicle. Motor easily reached for repairs.



GOES ALMOST ANYWHERE
Full drive on all four wheels takes the rugged Station Wagon where there are no roads—through mud, rocks, sand, snow, across wash, fields.



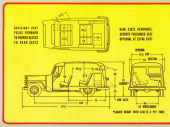
ROOM FOR SLEEPING
With tailgate down flush with floor, 8 1/2' space provides ample space for two adult sleeping bags. Heavy overhead cabin light is a convenience.



HAULS CARGO
When 4-wheel drive for better highway travel—carries up to half-ton with passengers. Strong, broad side-gate supports 1000 lb. Has over 100 cu. ft. cargo space.



CARRIES PASSENGERS
Seats six adults with ample luggage space. Ideal for families, excursions, games, parties and other fun going anywhere... irrespective of weather or roads.



Note the comfortable seating arrangement—the short wheelbase for short turns and easy parking—the single drive and space.

Look at the many practical **Features** offered you in

Willys DeLuxe Station Wagon



Seats, sides and ceiling are covered with washable plastic-coated material. Full interior can be scrubbed and cleaned. A real feature with farmers, haulers and families with children.



Strong tailgate will support up to half-ton . . . has full-width piano hinge . . . lowers to level of floor . . . offers smooth extension of cargo area. Tailgate lock provides easy, positive closure.



Comfort for the entire family with six full-size seats—lots of head, leg and hip space. Big room inside . . . big view outside. All seats removable except the driver's.



Engine vibration and noise is smothered with cushions of especially designed live-rubber, carefully calibrated and placed.

Huge cargo space available with passenger seats removed. Over 100 cubic feet of space with right front seat folded down and forward.



A simple turn of the ignition Startakey starts the motor. No more foot fumbling. A feature appreciated by ladies particularly.



New, soft contour seats for more riding comfort—upholstered in two-tone washable plastic. Makes trips less fatiguing.



Short wheel base, 104 inches . . . more visibility all around . . . makes parking easy in a space only 19 feet long. Has small 35-foot turning diameter.



Overhead dome light above windshield handy for map reading, checking route lists—deliveries—orders—mail.



In warm weather upper tailgate door can be opened and locked into position for better ventilation.



Planadyne front suspension smooths out rough streets . . . bumpy roads, improves riding comfort.



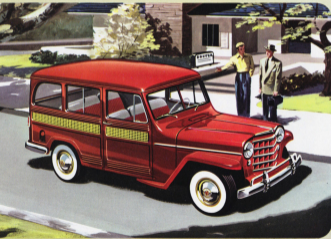
Fenders designed for high clearance, provide quick, easy change of tires . . . especially good feature for women.

MAKE MONEY OR HAVE FUN WITH THE **ALL-PURPOSE** *Willys DeLuxe Station Wagon*

For you who need an extra
all-purpose car...for you who
want one car to serve your
family and your business...

Willys Deluxe Station Wagon

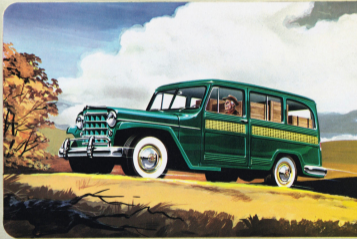
combines passenger-car comfort
with *utility, ability and economy*
available with 2 or 4-wheel drive



Ideal for—

- | | |
|-----------------------|-----------------------|
| • AIRPORTS | • RETIRED PEOPLE |
| • RANCHES | • DOCTORS |
| • SUMMER CAMPS | • GROCERS |
| • CONTRACTORS | • SALESMEN |
| • PHOTOGRAPHERS | • FARMERS |
| • JOBBERS | • MERCHANTS |
| • CARPENTERS | • DRUGGISTS |
| • PAINTERS | • PLUMBERS |
| • OIL FIELD OPERATORS | • RURAL MAIL CARRIERS |

FIRST STATION WAGON with ALL-STEEL BODY
Safer, Quieter, Longer Lasting, Easier to Maintain

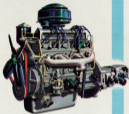


MAKE MONEY OR HAVE FUN WITH THE *ALL-PURPOSE* *Willys Deluxe Station Wagon*

Two Great Engines

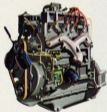
HURRICANE "6"

Big engineering sensation—7.6 to 1 compression, 90 hp. Hurricane "6" F-Head Engine—unmatched by any six in America for power in relation to size. Gives flashing performance, unqualified economy. Uses regular gasoline.



HURRICANE "4"

Operating economy is greater than ever in this amazing power plant—the Hurricane "4" F-Head Engine—with 72 hp.—compression ratio of 7.4 to 1. Uses regular gasoline.



WILLYS MOTORS, INC.
TOLEDO, OHIO

ROY E. BOX MOTOR
334 90. CHAPARRAL ST.
DALLAS 28, TEXAS

Willys DeLuxe Station Wagon

SPECIFICATIONS

MECHANICAL

Choice of Engines: Hurricane F-Head, valve-in-head intake, valve-in-block exhaust. Both engines with aluminum head-ash plates; top ring chrome-plated. Intake manifold cast in head and water-jacketed. Automatic spark advance. 4-point rubber mounting.

Hurricane 6-cylinder, 90 horsepower. Compression ratio 7.6 to 1, 8.0 to 1 optional for high altitude. Bore 3 3/8, stroke 3 1/2. Piston displacement 161 cu. in. Oil system, refill 5 qts. (6 cylinder engine not available in 4-WD Model.)

Hurricane 4-cylinder, 72 horsepower. Compression ratio 7.4 to 1, 7.8 to 1 optional for high altitude. Bore 3 3/8, stroke 4 1/8. Piston displacement 134.2 cu. in. Oil system, refill 4 qts.

Transmission: 3-speed silent synchromesh gears. Overdrive optional at extra cost, unavailable on 4-WD. (4-WD ratios: first 2.796:1, second 1.551:1, third 1:1, reverse 3.796:1)

Cooling System: Radiator capacity 9 qts. on 6 cylinder, 11 qts. on 4 cylinder. Thermostatic by-pass water recirculation for quick warm-up.

Electrical System: High output generator with regulator. Follow-through starter. Key starting. Sealed beam headlights.

Front Suspension: Flex-a-disc with independently sprung front wheels.

Double acting shock absorbers. (4-WD Model. Hotchkiss type drive with semi-elliptic springs and direct acting shock absorbers.)

Rear Suspension: Hotchkiss drive with direct acting shock absorbers.

Rear Axle: Hypoid gears; 5.38 to 1 ratio on 4 cylinder models; 4.88 to 1 on 6 cylinder models (5.38 to 1 with optional overdrive).

BASIC DIMENSIONS

Wheelbase 104 in. **Front tread** 55 1/2 in. **Rear tread** 57 in. **Overall length** 176 1/2 in. **Width** 71 1/2 in. **Height (loaded)** 72 1/2 in. **Tires, low pressure** 6.70 x 15—4 ply.

4-WD Model: **Wheelbase** 104 1/2 in. **Tread (front & rear)** 57 in. **Overall length** 176 1/2 in. **Width** 71 1/2 in. **Height (loaded)** 75 in. **Tires, 7.00 x 15—4 ply; non-directional tread.**

EQUIPMENT

Standard: Dome light. Two sun visors. Glove box. Dual windshield wipers. Arm rests front and rear. Ash trays front and rear. Inside rear-view mirror. Single low pitch horn. Key locks in both front doors. Dual stop and roll lights.

Optional at Extra Cost: Dual horns. Chrome wheel trim. White sidewall tires. Oil bath air cleaner. Vacuum booster pump. Front bumper guard.